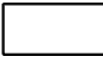

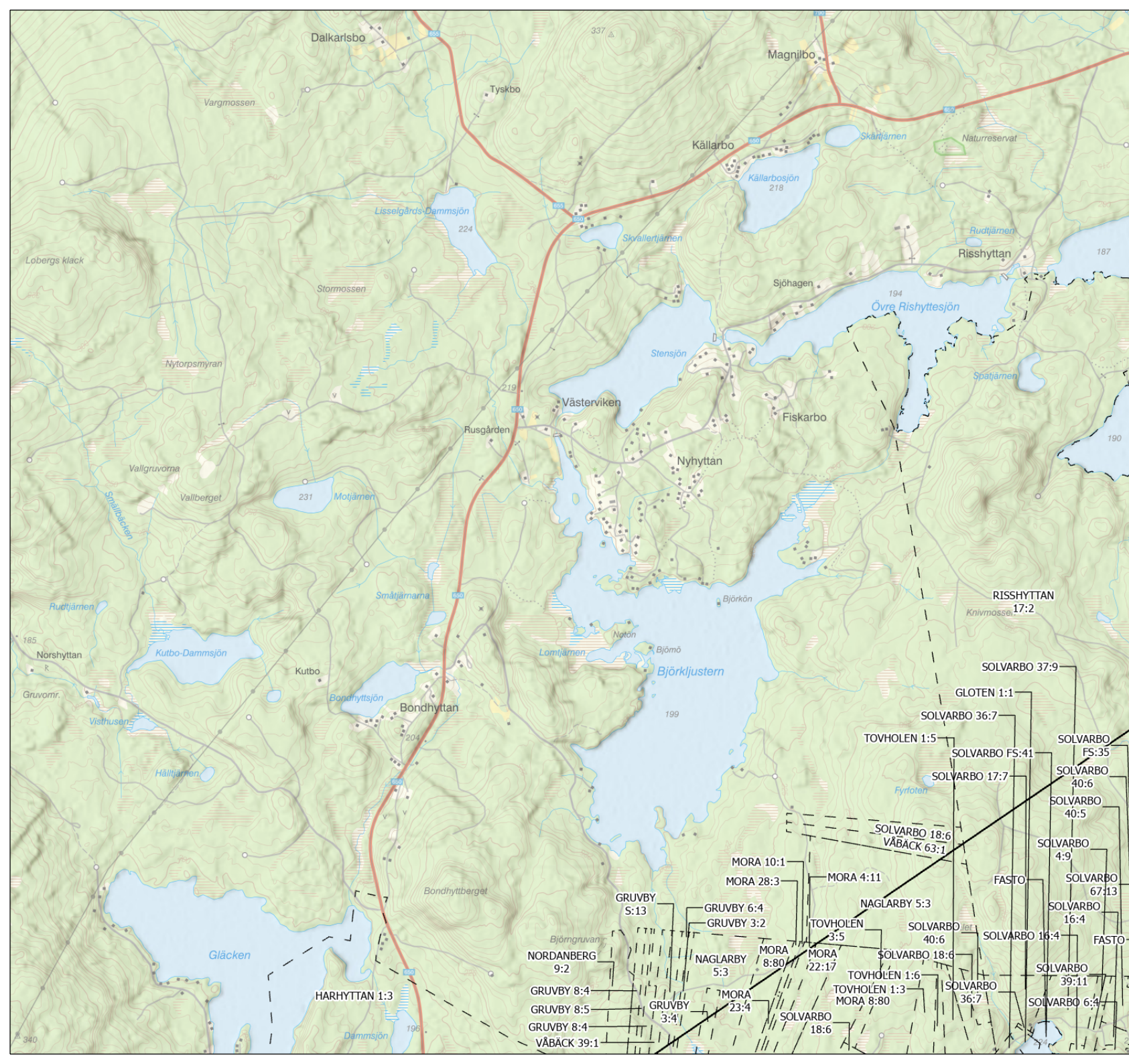


## Teckenförklaring

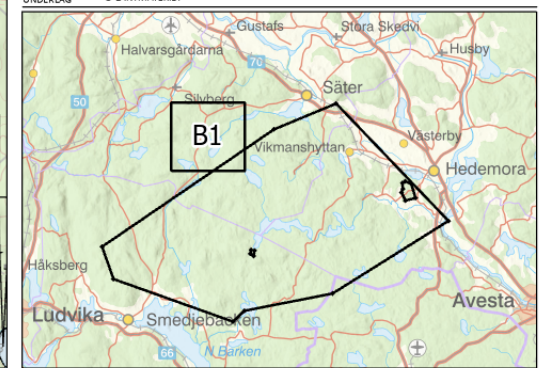
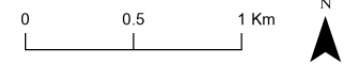
-  Hedemora nr 1
-  Berörda fastigheter



### Hedemora nr 1 Fastighetskarta B1

DATUM	2022-10-17
SKALA	1:35 000
LÄN	DALARNA
KOMMUN	VÄSTMANLAND
UNDERLAG	HEDEMORA NORBERG SMEDJEBÄCKEN SÄTER © LANTMÄTERIET

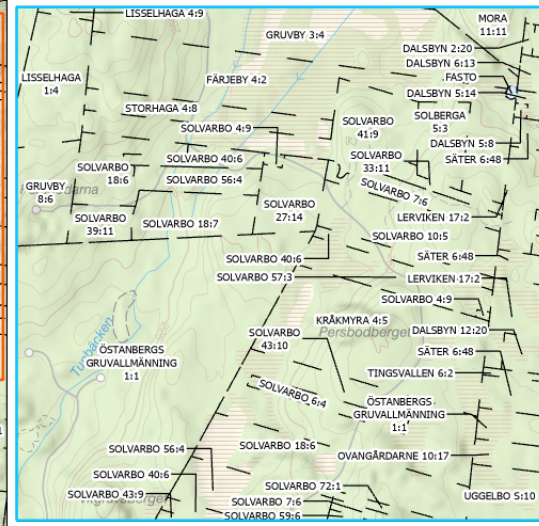
Sökande:  
Rolling Road Exploration AB





## Teckenförklaring

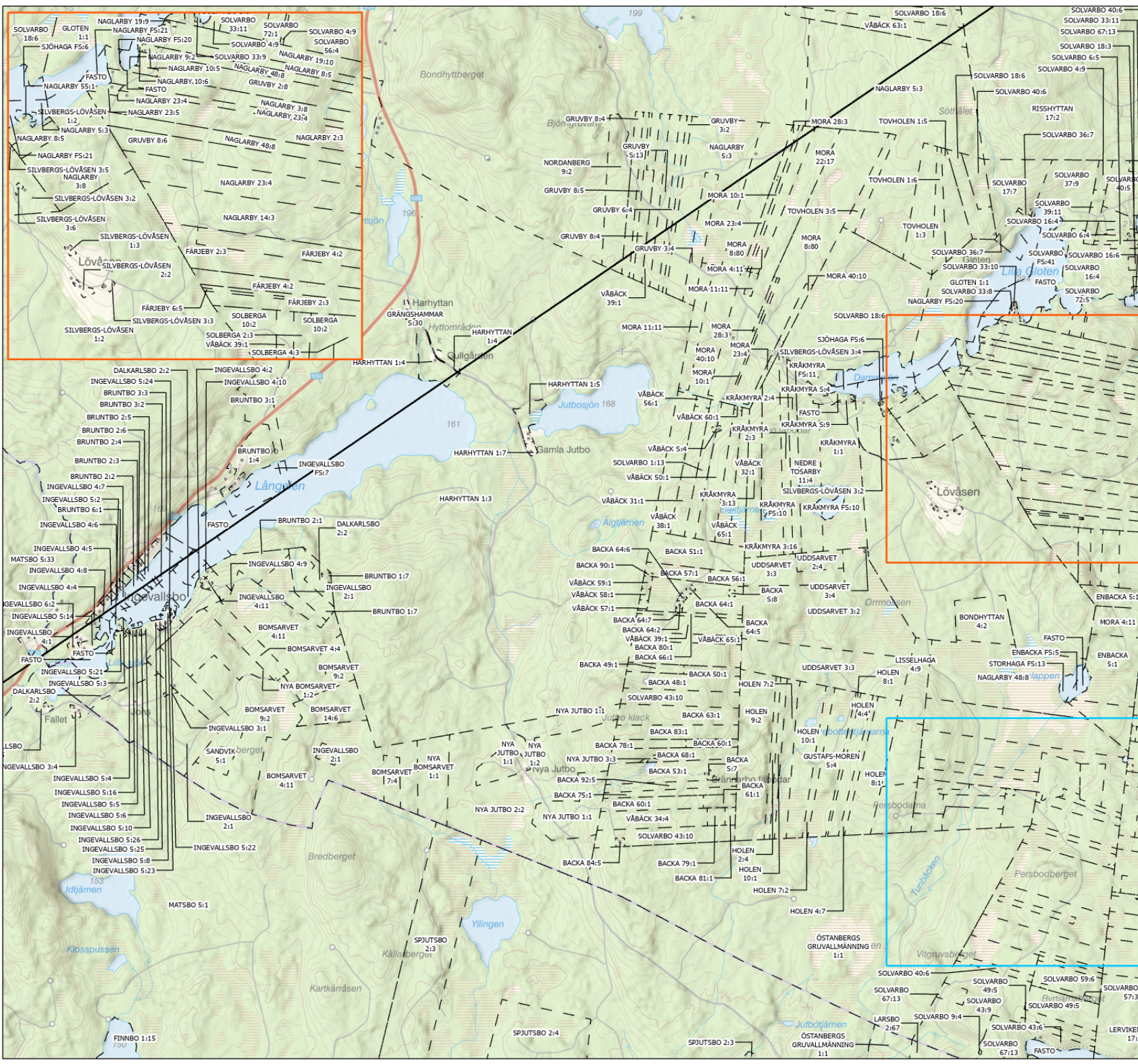
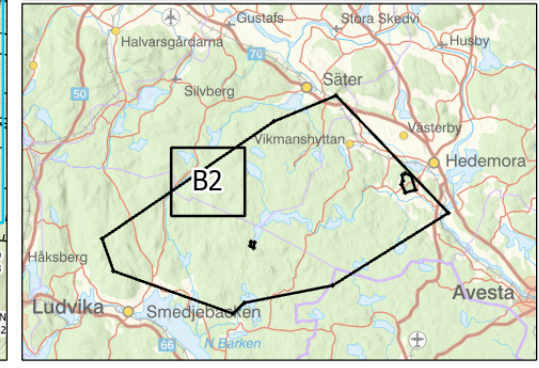
- Hedemora nr 1
- Berörda fastigheter



Hedemora nr 1  
Fastighetskarta B2

Sökande:  
Rolling Road Exploration AB

DATUM	2022-10-18
SKALA	1:35 000
LÄN	DALARNA VÄSTMANLAND
KOMMUN	HEDEMORA NORBERG SMEDJEBÄCKEN SÄTER
UNDERLAG	© LANTMÄTERIET





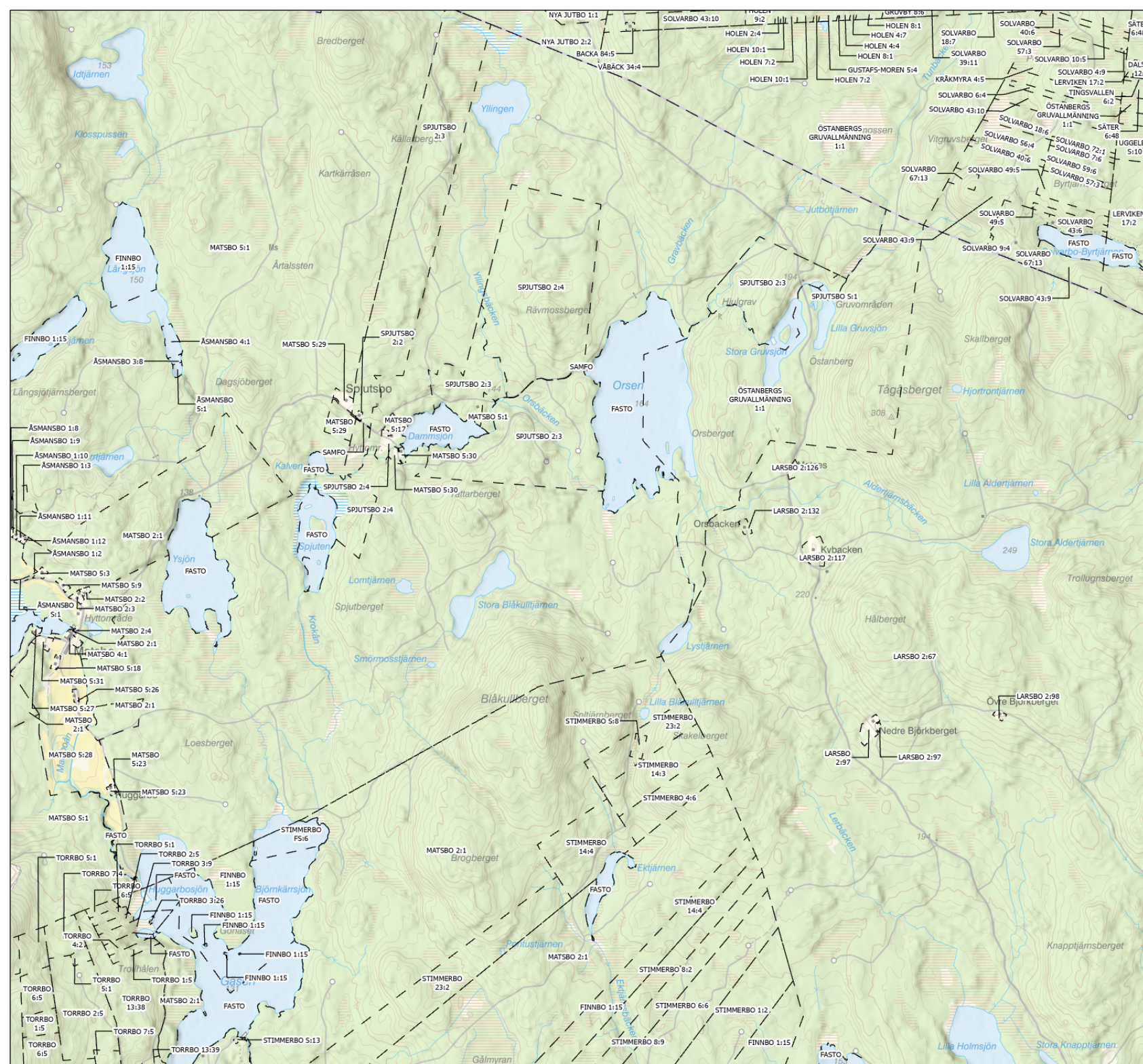
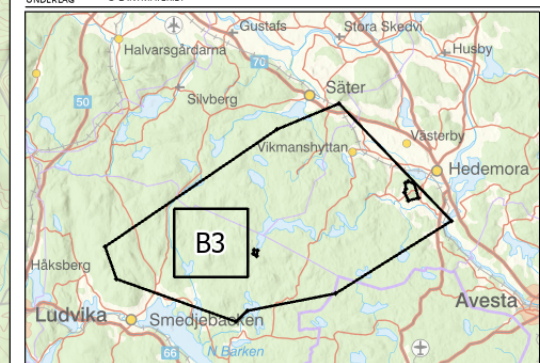
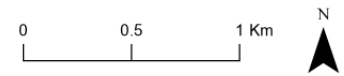
## Teckenförklaring

- Hedemora nr 1
- Berörda fastigheter

### Hedemora nr 1 Fastighetskarta B3

Sökande:  
Rolling Road Exploration AB

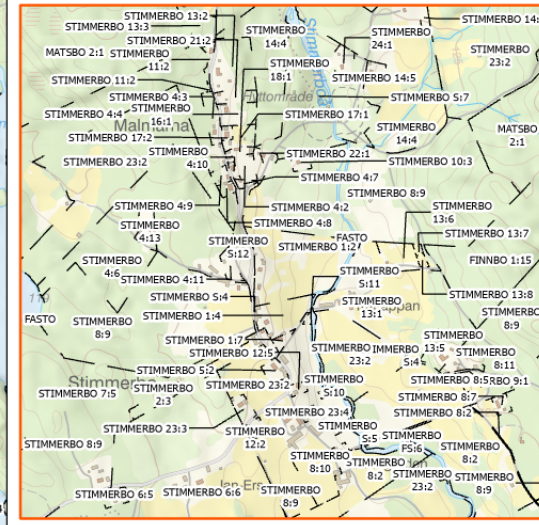
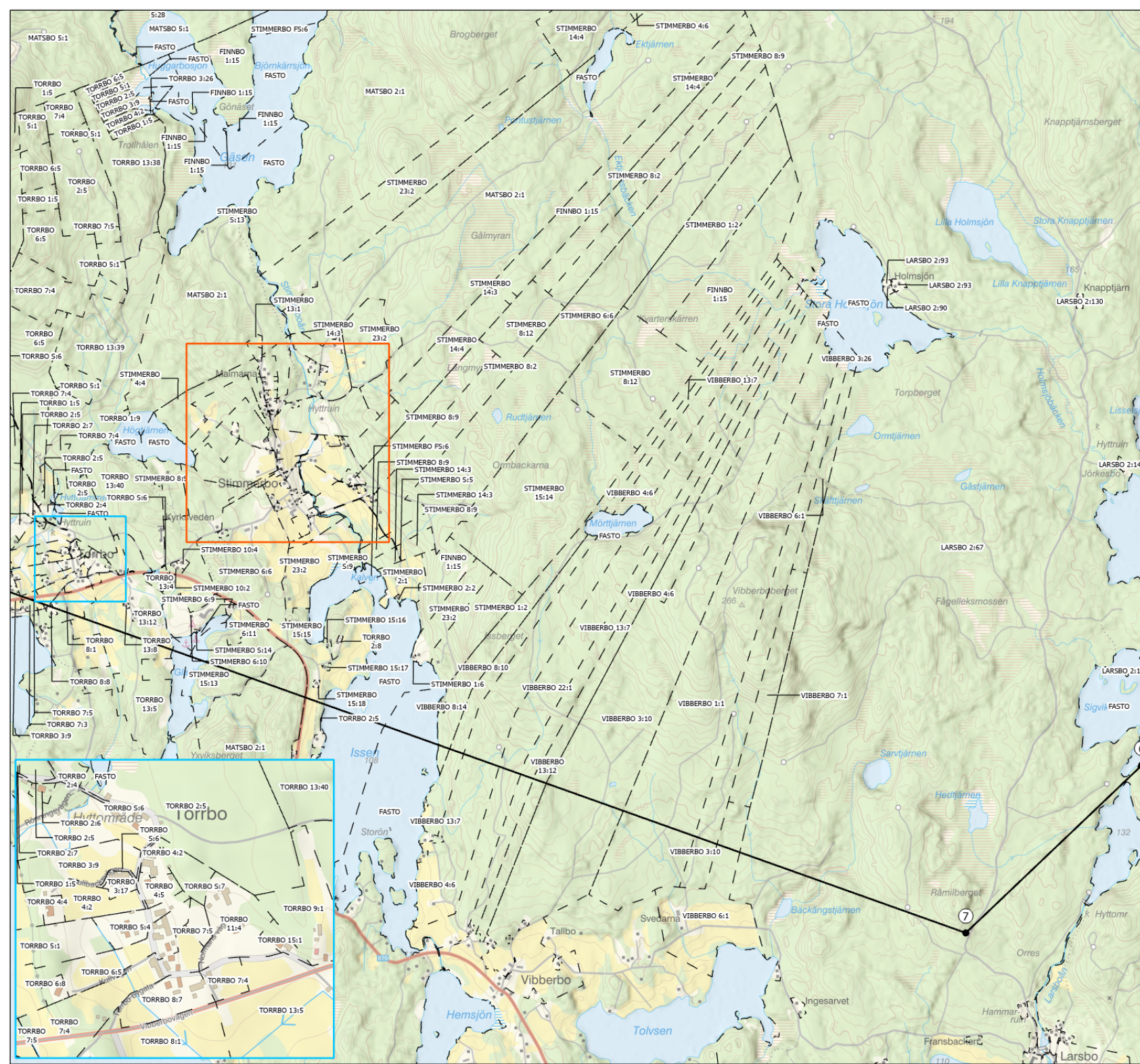
DATUM	2022-10-18
SKALA	1:35 000
LÄN	DALARNA
KOMMUN	VÄSTMANLAND
	HEDEMORA
	NORBERG
	SMEDJEBÄCKEN
	SÄTER
UNDERLAG	© LANTMÄTERIET





## Teckenförklaring

- Koordinatreferenser
- Hedemora nr 1
- Berörda fastigheter



Hedemora nr 1  
Fastighetskarta B4

Sökande:  
Rolling Road Exploration AB

DATUM	2022-10-18
SKALA	1:35 000
LÄN	DALARNA
KOMMUN	HEDEMORA
UNDERLAG	© LANTMÄTERIET

