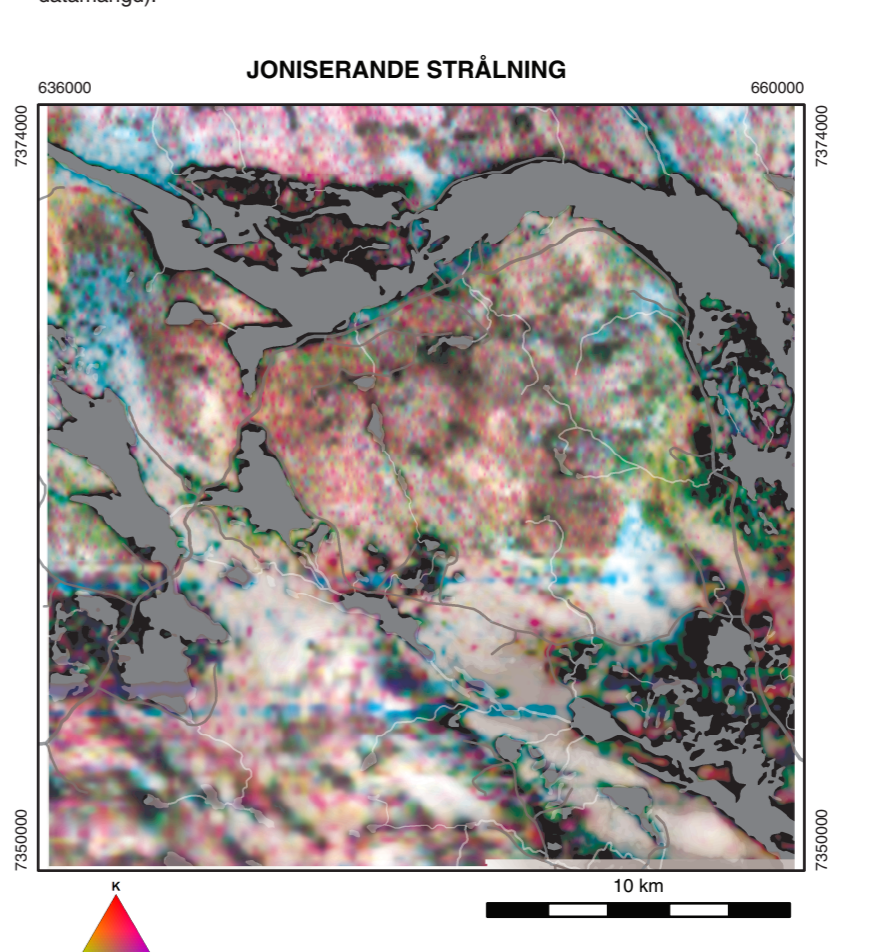
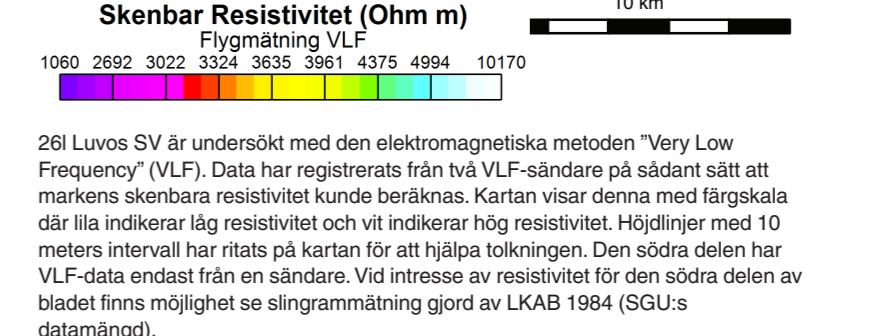
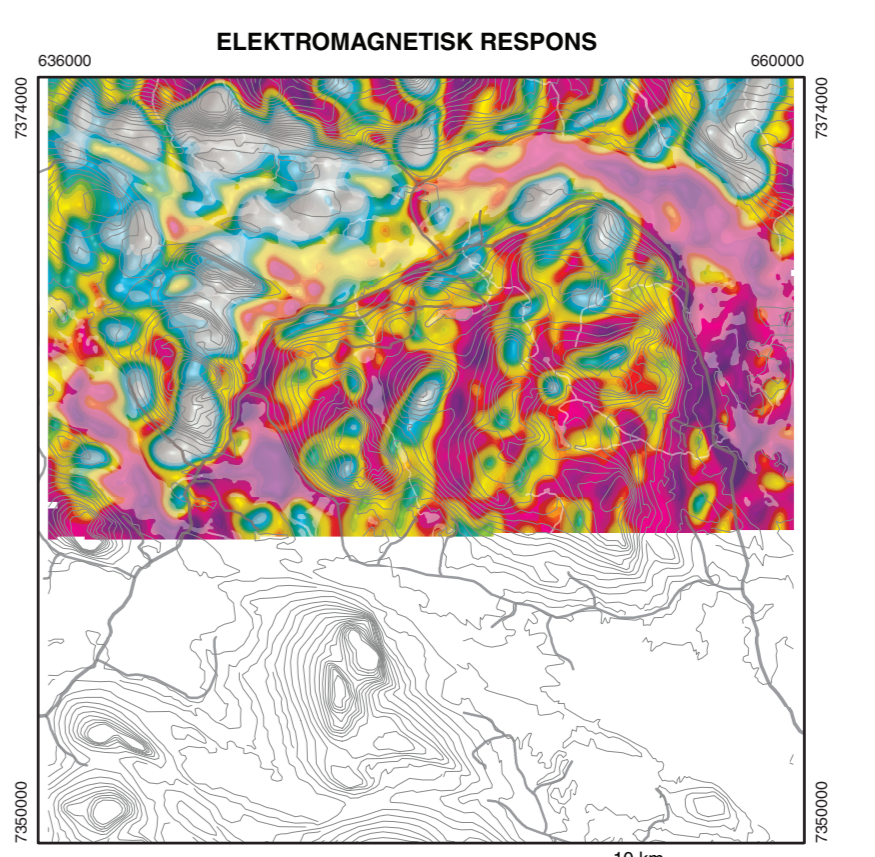
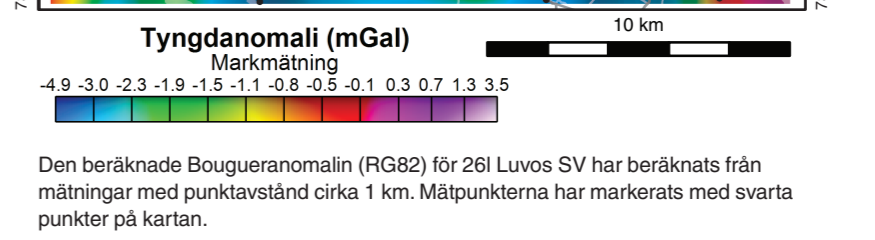
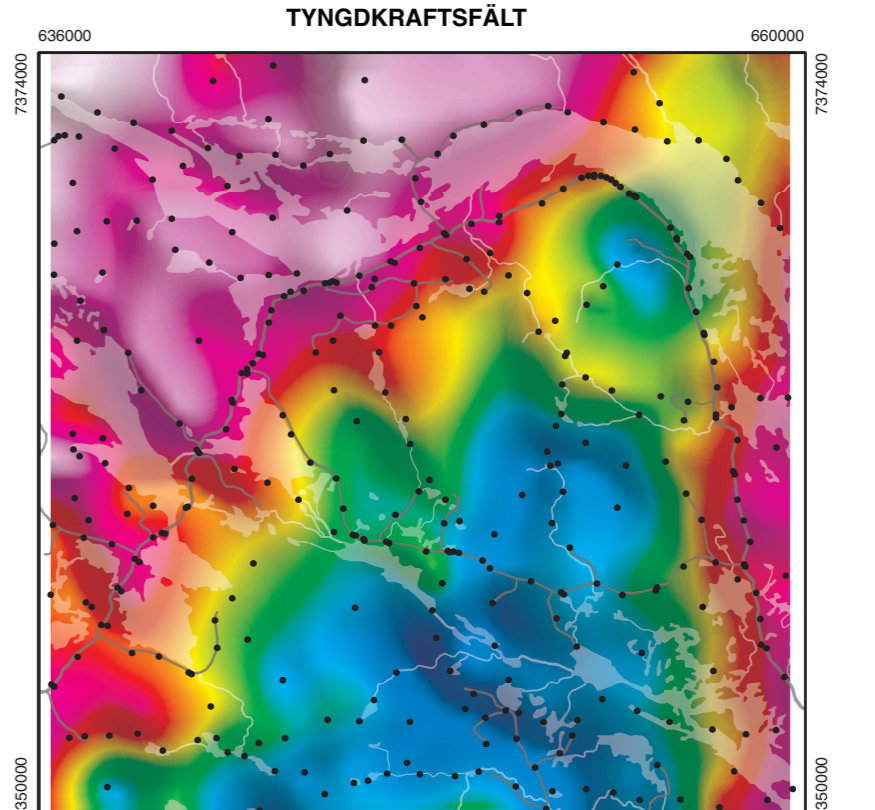
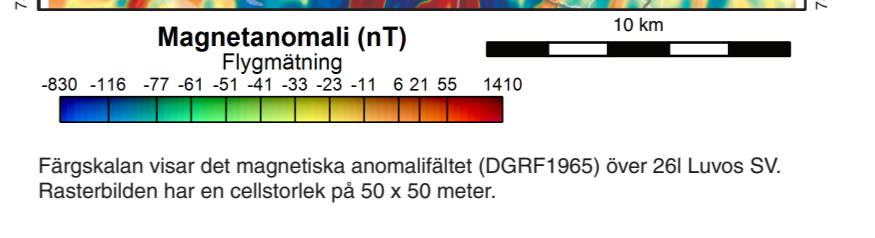
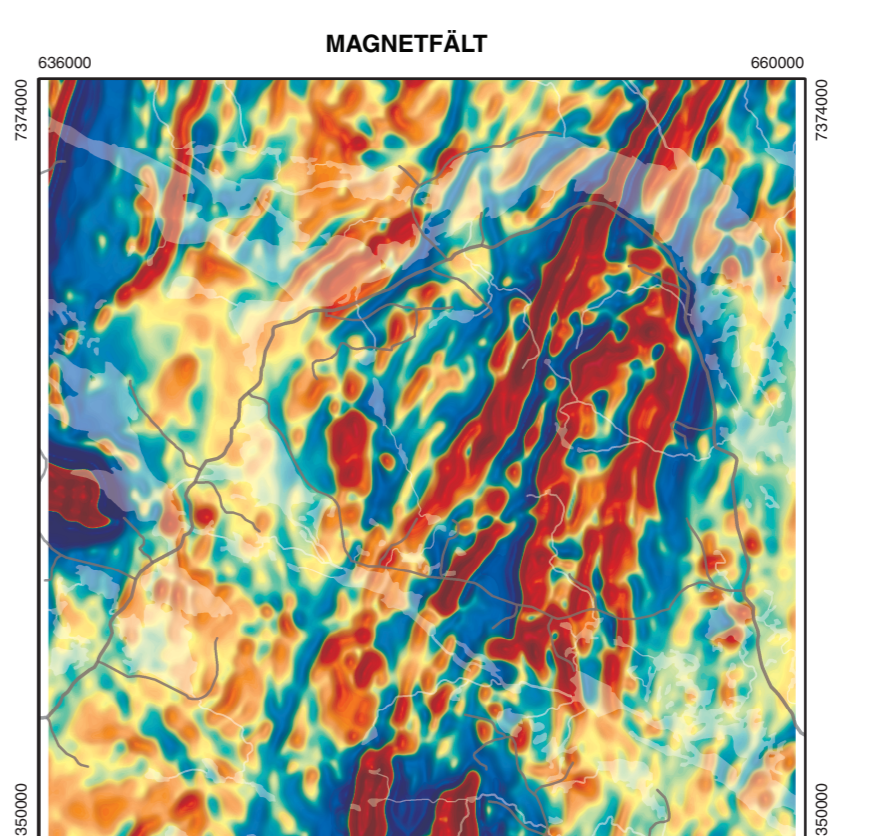
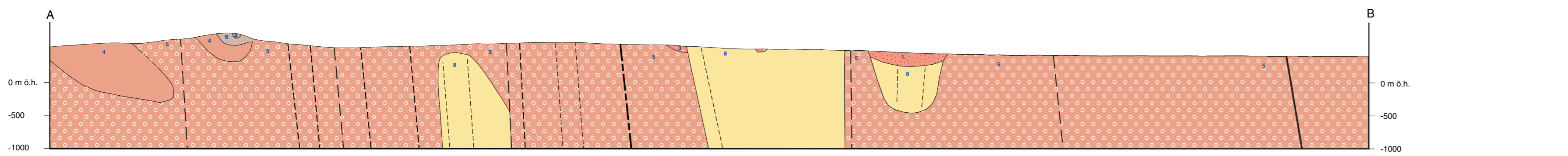


- Legend for geological features including: Observed hill, Magnetic mineralization, Sulfidmineralization, Uranium mineralization, Core drilling, and various rock types like Metagranit, Metabasalt, and Gång.

- Legend for radiometric and geochronological data, including: Late Svecofennian intrusives (1.82-1.74 Ga), Early Svecofennian intrusives (1.88-1.86 Ga), and various volcanic rocks.



Denna figur visar på förekomst och fördelning av de aktiva isotoperna 40K, 232Th och 238U i kartområdet 261 Luvos SV.



SGU serie K 680
Berggrundskartan
261 Luvos SV
Bedrock map
Skala 1:50 000
SGU logo and year 2021.

En beskrivning till kartan kan beställas från SGUs kundjämt eller hämtas på SGUs webbplats www.sgu.se.

Den geologiska karteringen av området 261 Luvos SV... Information om kartens innehåll och tillförlitlighet.