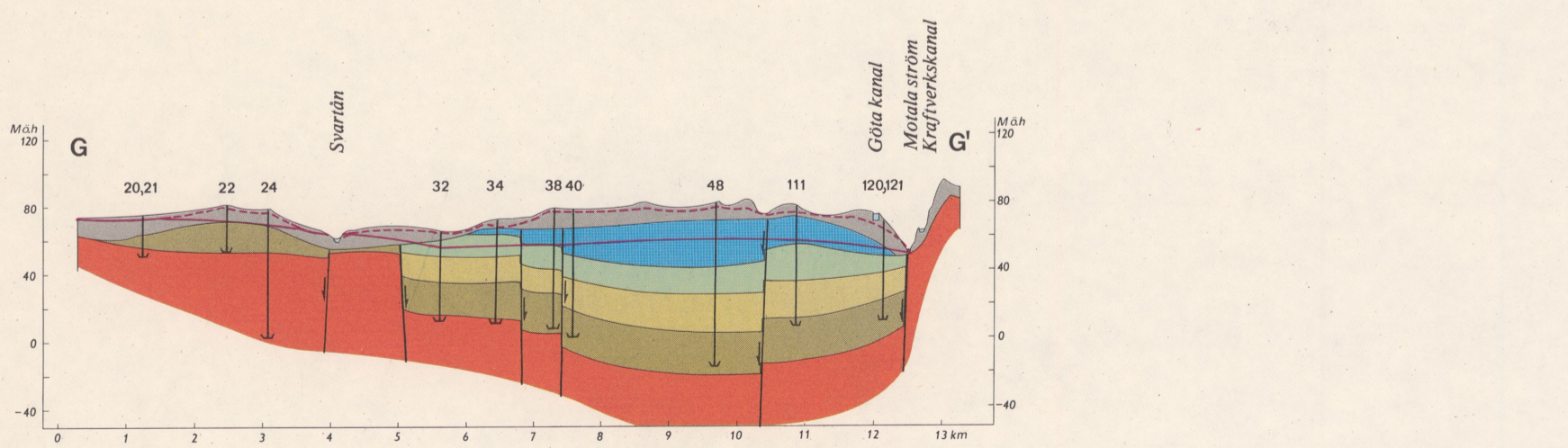
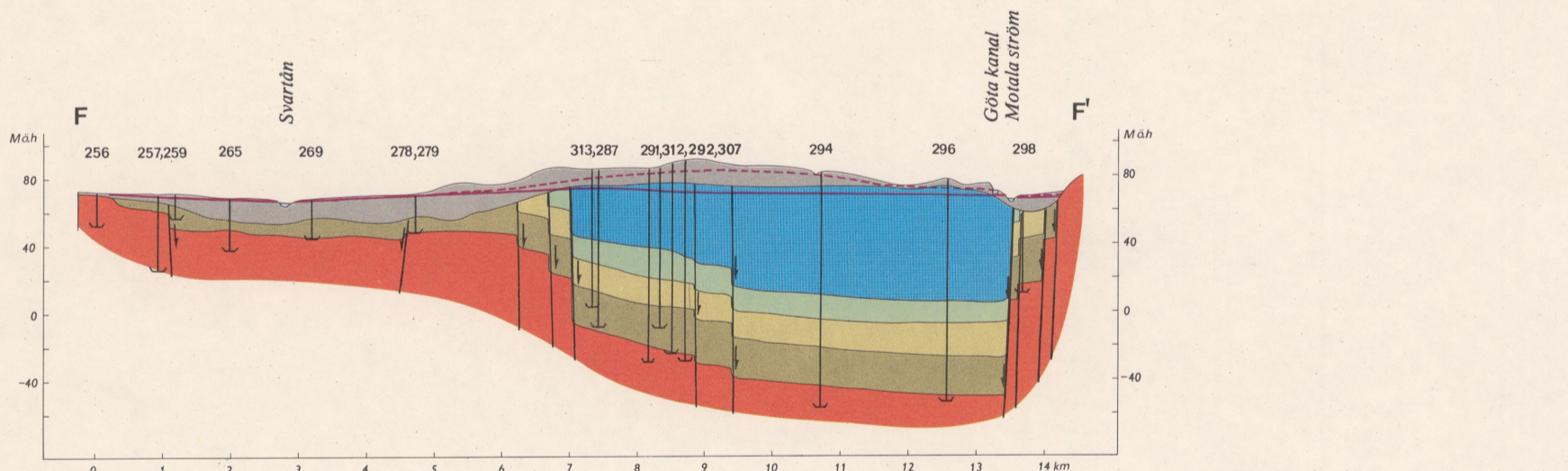
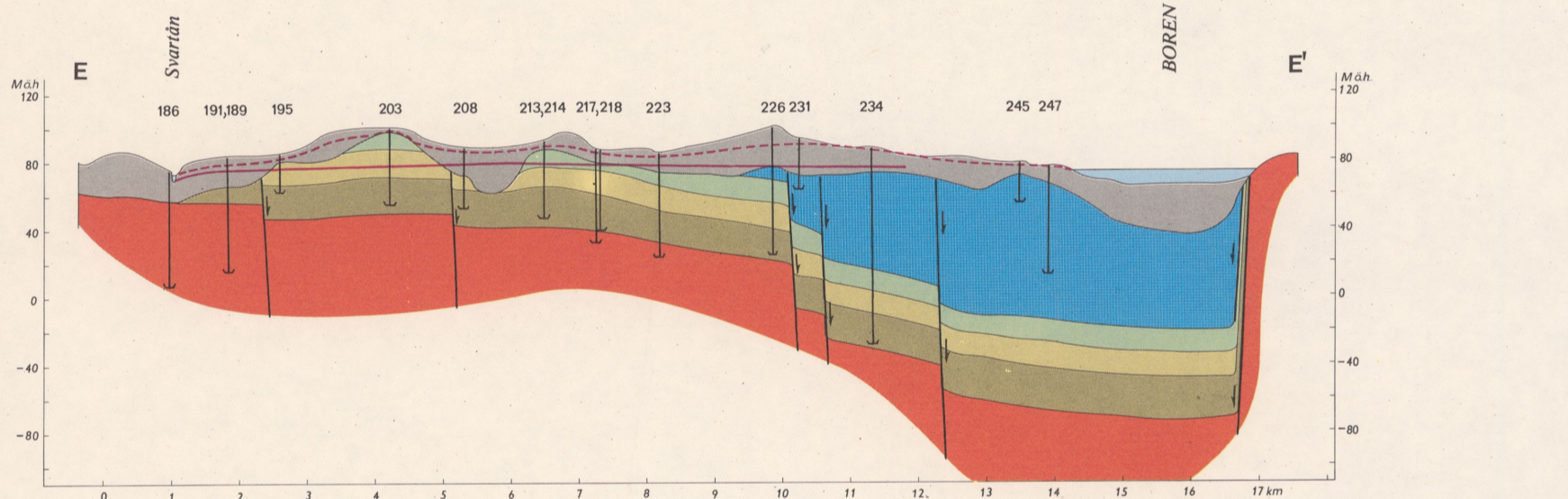
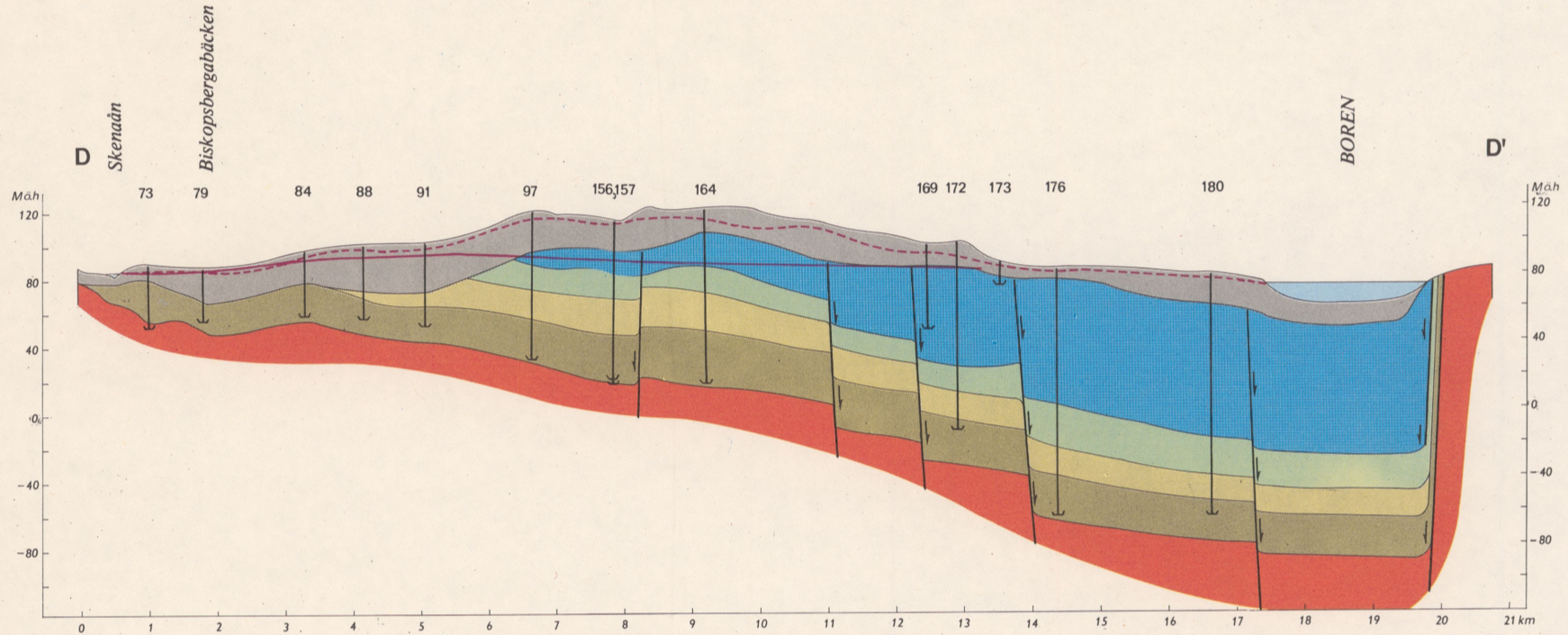
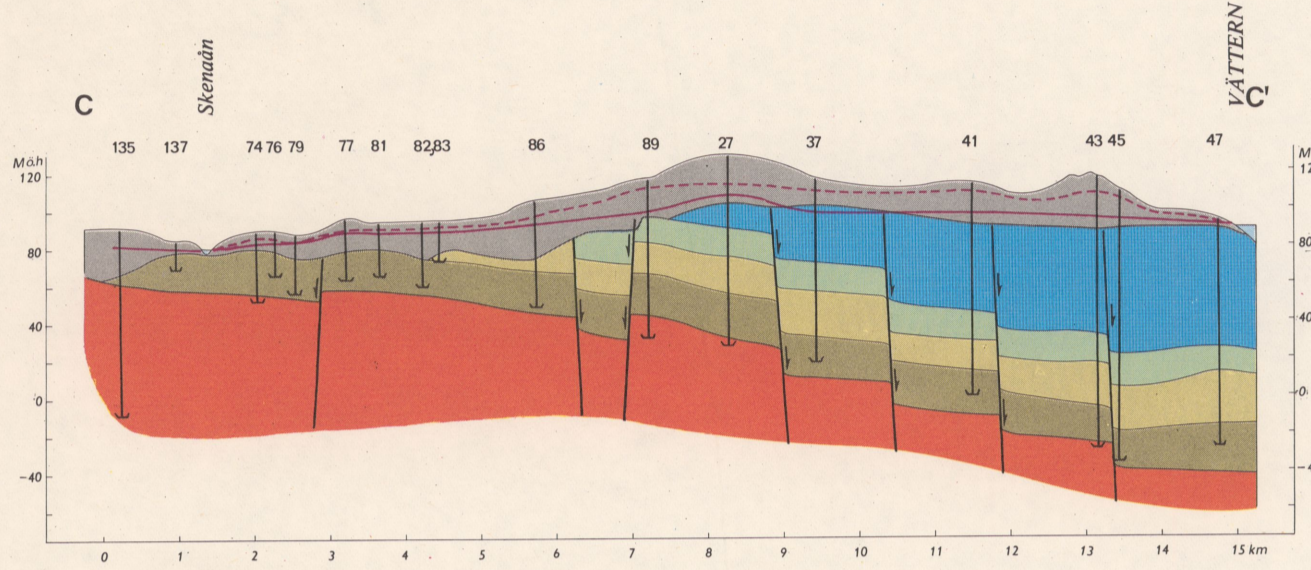
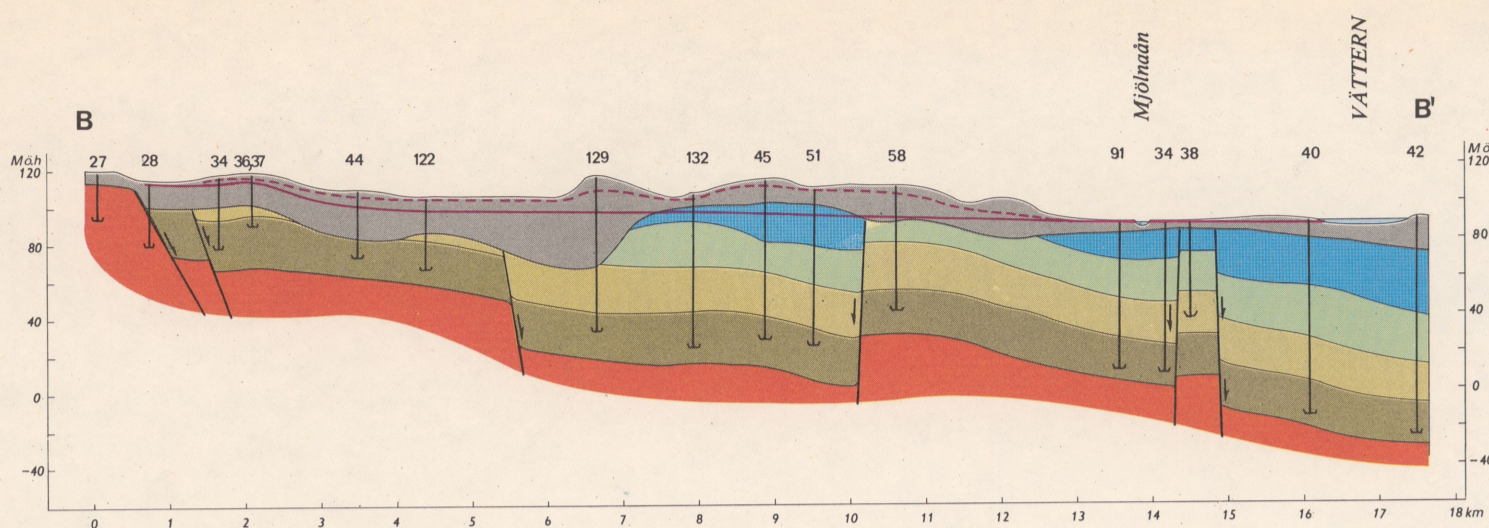
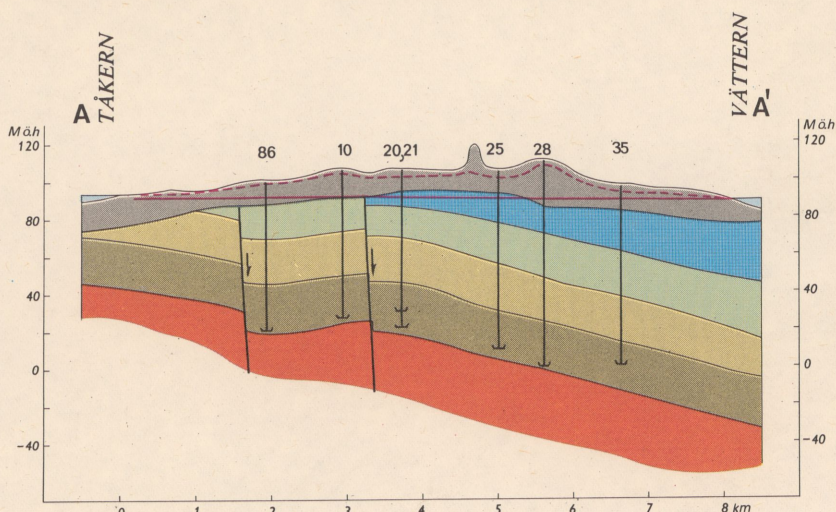


ÖSTERGÖTLANDS
SEDIMENTÄRA BERGGRUND

Hydrogeologisk översikt

Profiler
Profiles



- Jordlager
Quaternary deposits
- Kalksten, ordovicisk
Limestone, Ordovician
- Alunskiffer, huvudsakligen kambrisk
Alum shales, mainly Cambrian
- Lerskiffer, kambrisk
Shale, Cambrian
- Sandsten, kambrisk
Sandstone, Cambrian
- Urberg, prekambriskt
Crystalline basement, Precambrian

- Förkastning, fastlagd eller antagen
Fault, confirmed or inferred
- Grundvattennivå (piezometrisk trycknivå) i meter över havet i sandstensakviferen
Piezometric level in metres above sea level in the sandstone aquifer
- Grundvattennivå i meter över havet i jordlagren
Groundwater level in metres above sea level in Quaternary deposits
- 196
Brunn med registreringsnummer
Well with register number
- Profilernas läge framgår av den hydrogeologiska översiktskartan
For location of profiles see the hydrogeological key map