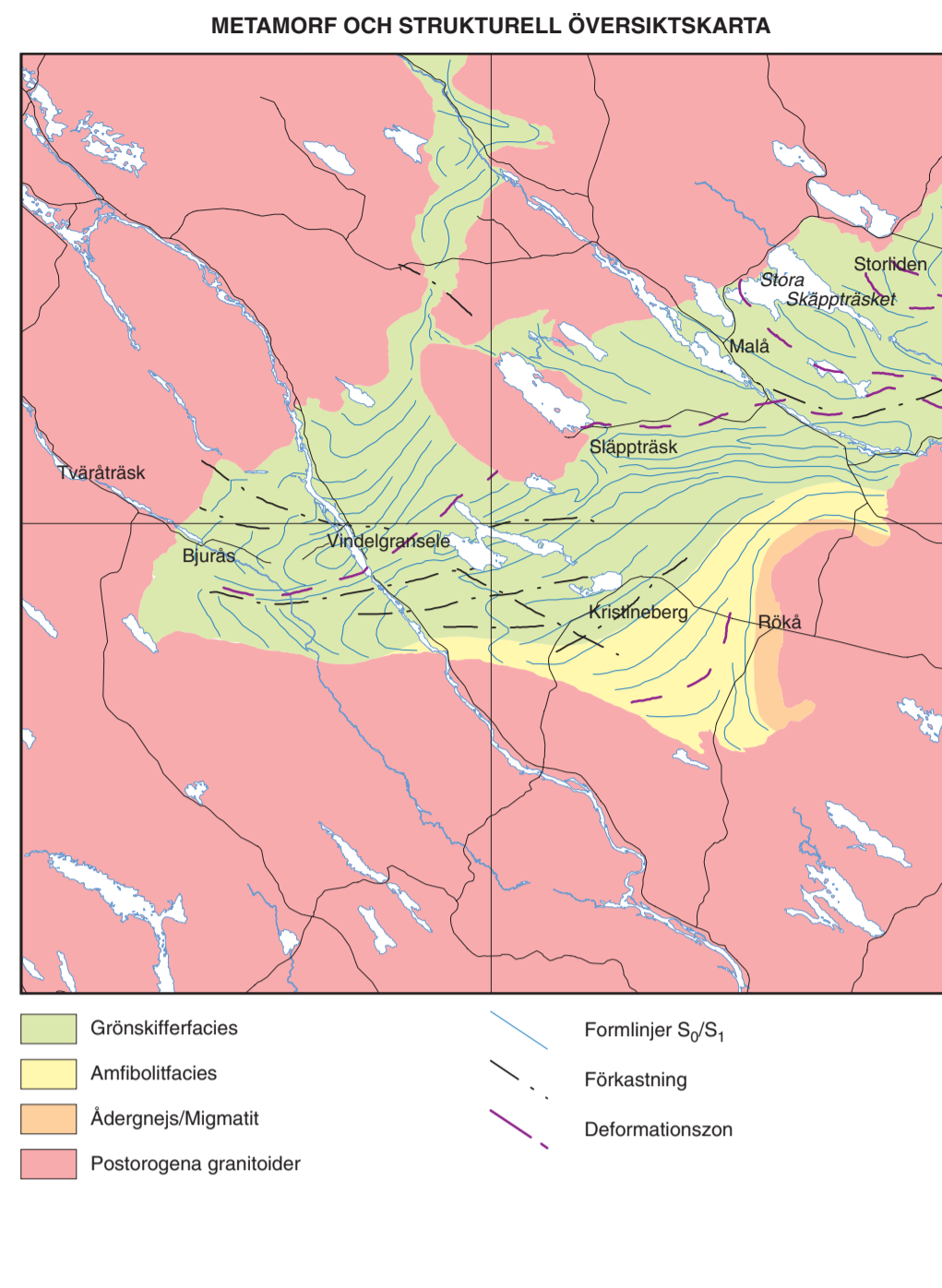


- Legend for the geological map, including symbols for outcrops, sulfide deposits, boreholes, and various geological features like faults and folds. It also includes a list of geological units with their corresponding symbols and colors.

Geological profile and scale information. The profile shows the subsurface structure of the area, and the scale is 1:50,000. It includes contact information for the Swedish Geological Survey (SGU).

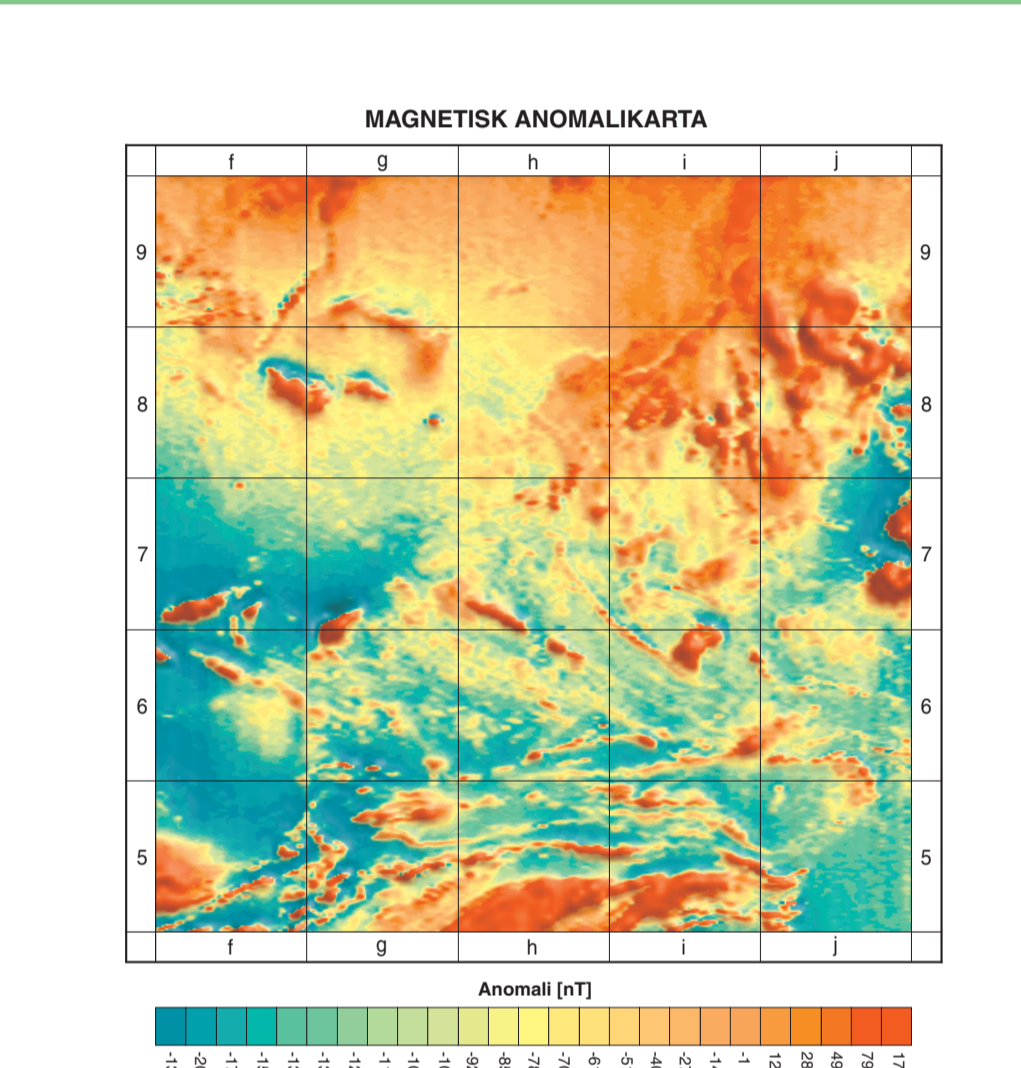


Berggrundsgesläkts utveckling (Geological development of the rock groups). This section describes the tectonic and metamorphic evolution of the area, including the timing and nature of deformation and metamorphism.

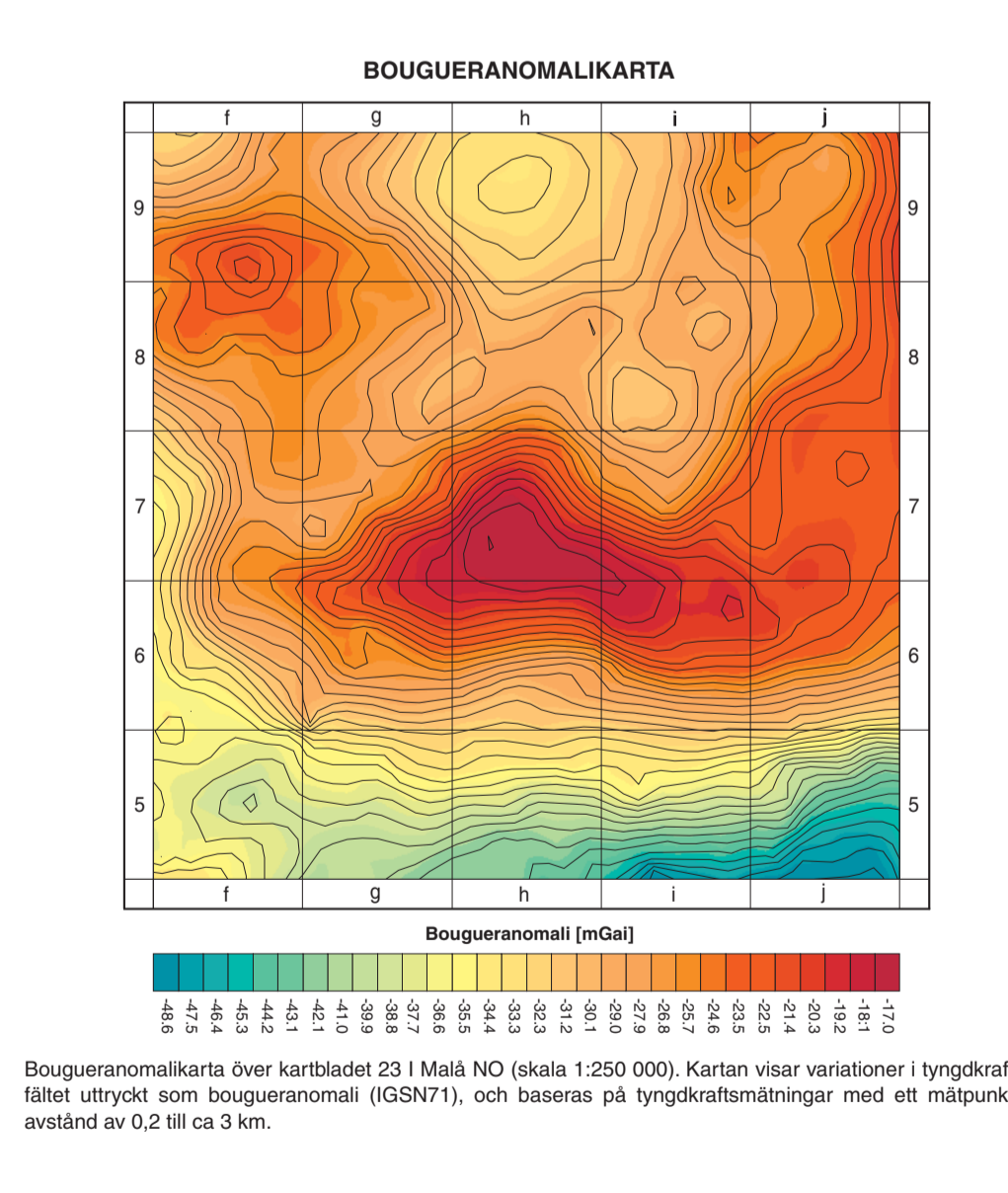
Bergartsbeskrivning (Rock description). This section provides detailed descriptions of the various rock types found in the area, including their mineralogical and petrological characteristics.

Kortfattad beskrivning (Brief description) and Inledning och metodik (Introduction and methodology). This section provides a concise overview of the geological findings and the methods used in the study.

SGU serie AI nr 115. Berggrundskartan 231 Malå NO. Bedrock map. Skala 1:50 000. Includes a small inset map of Sweden and the SGU logo.



Magnetisk anomalkarta över kartbladet 231 Malå NO (skala 1:250 000). Magnetska data är reducerade till epok 1965.0. Kartan visar totalfältets avvikelse från DGRF 1965.0. Den baseras på flygmåttningar utförda på 30 meters flyghöjd med ett linjeavstånd på 200 m och en nord-östlig flygriktning.



Bougueranomalkarta över kartbladet 231 Malå NO (skala 1:250 000). Kartan visar variationer i yngtkraftsfältet uttryckt som bougueranomali (GSGN71), och baseras på kontinentalmåttningar med ett måttkretsavstånd av 0,2 till ca 3 km.

Geological map series information. This section provides details about the map series, including the scale, projection, and contact information for the Swedish Geological Survey (SGU).

