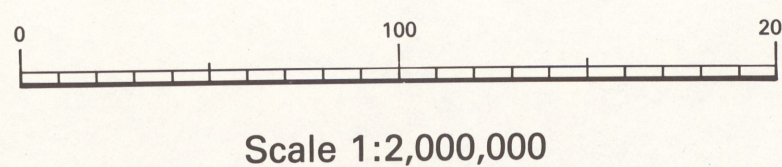


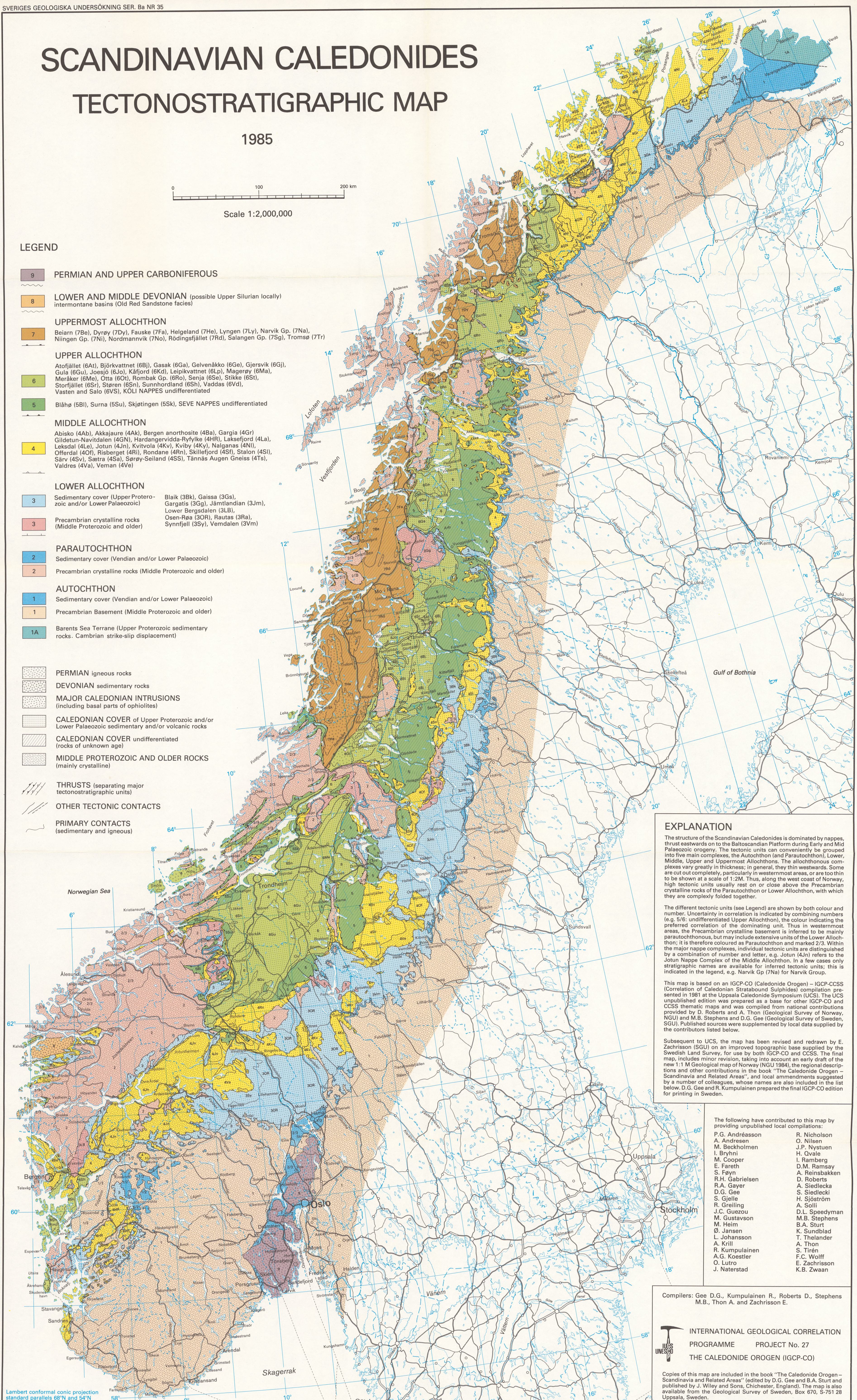
# SCANDINAVIAN CALEDONIDES TECTONOSTRATIGRAPHIC MAP

1985



## LEGEND

- 9 PERMIAN AND UPPER CARBONIFEROUS**
- 8 LOWER AND MIDDLE DEVONIAN** (possible Upper Silurian locally)  
intermontane basins (Old Red Sandstone facies)
- UPPERMOST ALLOCHTHON**
- 7** Beirn (7Be), Dyrsø (7Dy), Fauske (7Fa), Helgeland (7He), Lyngen (7Ly), Narvik Gp. (7Na), Niingen Gp. (7Ni), Nordmannvik (7No), Rödingsfjället (7Rd), Salangen Gp. (7Sg), Tromsø (7Tr)
- UPPER ALLOCHTHON**
- 6** Atofjället (6At), Björkvatnet (6Bj), Gasak (6Ga), Gelvenåko (6Ge), Gjersvik (6Gj), Gula (6Gu), Joesjö (6Jo), Kärfjord (6Kd), Leipikvatnet (6Lp), Magerøy (6Ma), Meråker (6Me), Otta (6Ot), Rombod Gp. (6Ro), Venja (6Ve), Stikke (6St), Storfjället (6Sr), Støren (6Sn), Sunnhordland (6Sh), Vaddas (6Vd), Vasten and Salo (6VS), KÖLI NAPPES undifferentiated
- 5** Blåhø (5Bl), Surna (5Su), Skjöttingen (5Sk), HELVE NAPPES undifferentiated
- MIDDLE ALLOCHTHON**
- 4** Abisko (4Ab), Akkajaure (4Ak), Bergen anorthosite (4Ba), Gargia (4Gr), Gildetun-Navtaldalen (4GN), Hardangervidda-Ryfylke (4HR), Laksefjord (4La), Leksdal (4Le), Jotun (4Jn), Kvitvola (4Kv), Kviby (4Ky), Nalganas (4Ni), Offerdal (4Of), Risberget (4Ri), Rondane (4Rn), Skillefjord (4Sf), Stalon (4St), Särvi (4Sv), Søtra (4Sa), Sørøy-Seiland (4SS), Tännäs Augén Gneiss (4Ts), Valdres (4Va), Veman (4Ve)
- LOWER ALLOCHTHON**
- 3** Sedimentary cover (Upper Proterozoic and/or Lower Palaeozoic)      Blaik (3Bk), Gaissa (3Gs), Gargatis (3Gg), Jämtlandian (3Jm), Lower Bergsdalen (3LB), Osen-Røa (3OR), Rautas (3Ra), Synnfjell (3Sy), Vemdalen (3Vm)
- 3** Precambrian crystalline rocks (Middle Proterozoic and older)
- PARAUTOCHTHON**
- 2** Sedimentary cover (Vendian and/or Lower Palaeozoic)
- 2** Precambrian crystalline rocks (Middle Proterozoic and older)
- AUTOCHTHON**
- 1** Sedimentary cover (Vendian and/or Lower Palaeozoic)
- 1** Precambrian Basement (Middle Proterozoic and older)
- 1A** Barents Sea Terrane (Upper Proterozoic sedimentary rocks. Cambrian strike-slip displacement)
- PERMIAN igneous rocks**
- DEVONIAN sedimentary rocks**
- MAJOR CALEDONIAN INTRUSIONS**  
(including basal parts of ophiolites)
- CALEDONIAN COVER** of Upper Proterozoic and/or Lower Palaeozoic sedimentary and/or volcanic rocks
- CALEDONIAN COVER** undifferentiated  
(rocks of unknown age)
- MIDDLE PROTEROZOIC AND OLDER ROCKS**  
(mainly crystalline)
- THRUSTS** (separating major tectonostratigraphic units)
- OTHER TECTONIC CONTACTS**
- PRIMARY CONTACTS**  
(sedimentary and igneous)



## EXPLANATION

The structure of the Scandinavian Caledonides is dominated by nappes, thrust eastwards on to the Baltoscandian Platform during Early and Mid Palaeozoic orogeny. The tectonic units can conveniently be grouped into five main complexes, the Autochthon (and Parautochthon), Lower, Middle, Upper and Uppermost Allochthons. The allochthonous complexes vary greatly in thickness; in general, they thin westwards. Some are cut out completely, particularly in westernmost areas, or are too thin to be shown at a scale of 1:2M. Thus, along the west coast of Norway, high tectonic units usually rest on or close above the Precambrian crystalline rocks of the Parautochthon or Lower Allochthon, with which they are complexly folded together.

The different tectonic units (see Legend) are shown by both colour and number. Uncertainty in correlation is indicated by combining numbers (e.g. 5/6: undifferentiated Upper Allochthon), the colour indicating the preferred correlation of the dominating unit. Thus in westernmost areas, the Precambrian crystalline basement is inferred to be mainly parautochthonous, but may include extensive units of the Lower Allochthon; it is therefore coloured as Parautochthon and marked 2/3. Within the major nappe complexes, individual tectonic units are distinguished by a combination of number and letter, e.g. Jotun (4Jn) refers to the Jotun Nappe Complex of the Middle Allochthon. In a few cases only stratigraphic names are available for inferred tectonic units; this is indicated in the legend, e.g. Narvik Gp (7Na) for Narvik Group.

This map is based on an IGCP-CO (Caledonide Orogen) - IGCP-CCSS (Correlation of Caledonian Stratabound Sulphides) compilation presented in 1981 at the Uppsala Caledonide Symposium (UCS). The UCS unpublished edition was prepared as a base for other IGCP-CO and CCSS thematic maps and was compiled from national contributions provided by D. Roberts and A. Thon (Geological Survey of Norway, NGU) and M.B. Stephens and D.G. Gee (Geological Survey of Sweden, SGU). Published sources were supplemented by local data supplied by the contributors listed below.

Subsequent to UCS, the map has been revised and redrawn by E. Zachrisson (SGU) on an improved topographic base supplied by the Swedish Land Survey, for use by both IGCP-CO and CCSS. The final map includes minor revision, taking into account an early draft of the new 1:1 M Geological map of Norway (NGU 1984), the regional descriptions and other contributions in the book "The Caledonide Orogen - Scandinavia and Related Areas", and local amendments suggested by a number of colleagues, whose names are also included in the list below. D.G. Gee and R. Kumpulainen prepared the final IGCP-CO edition for printing in Sweden.

The following have contributed to this map by providing unpublished local compilations:

- |                 |                |
|-----------------|----------------|
| P.G. Andréasson | R. Nicholson   |
| A. Andresen     | O. Nilsen      |
| M. Beckholm     | J.P. Nyström   |
| I. Bryhni       | H. Qvale       |
| I. Cooper       | I. Ramberg     |
| E. Fareth       | D.M. Ramsay    |
| S. Føyn         | A. Reinsbakken |
| R.H. Gabrielsen | D. Roberts     |
| R.A. Gayer      | A. Siedlecka   |
| D.G. Gee        | S. Siedlecki   |
| S. Gjelle       | A. Sjöström    |
| R. Greiling     | A. Sjölin      |
| J.C. Guezou     | D.L. Speedyman |
| M. Gustavson    | M.B. Stephens  |
| M. Heim         | B.A. Sturt     |
| Ø. Jansen       | K. Sundblad    |
| L. Johansson    | T. Thelander   |
| A. Krill        | A. Thon        |
| R. Kumpulainen  | S. Tirén       |
| A.G. Koestler   | F.C. Wolff     |
| O. Lutro        | E. Zachrisson  |
| J. Naterstad    | K.B. Zwaan     |

Compilers: Gee D.G., Kumpulainen R., Roberts D., Stephens M.B., Thon A. and Zachrisson E.

**INTERNATIONAL GEOLOGICAL CORRELATION PROGRAMME PROJECT No. 27 THE CALEDONIDE OROGEN (IGCP-CO)**

Copies of this map are included in the book "The Caledonide Orogen - Scandinavia and Related Areas" (edited by D.G. Gee and B.A. Sturt and published by J. Wiley and Sons, Chichester, England). The map is also available from the Geological Survey of Sweden, Box 670, S-751 28 Uppsala, Sweden.