

STÖRRE METALLISKA MINERALFÖREKOMSTER

Table listing larger metallic mineral deposits with columns for deposit name, location, and other details. Includes a legend for deposit types such as iron, copper, and zinc.

REGIONALA GEOLOGISKA OCH GEOFYSSISKA KARTOR ÖVER BERGSLAGEN MED OMGIVNING

MINERALRESURSKARTA

REGIONAL GEOLOGICAL AND GEOPHYSICAL MAPS OF BERGSLAGEN AND SURROUNDINGS

MINERAL RESOURCES MAP

2007



- Legend for geological features including faults, folds, and mineral resources. Includes symbols for different types of faults and mineral deposits.

SEDIMENTÄR PÅLAGNING / SEDIMENTARY COVER

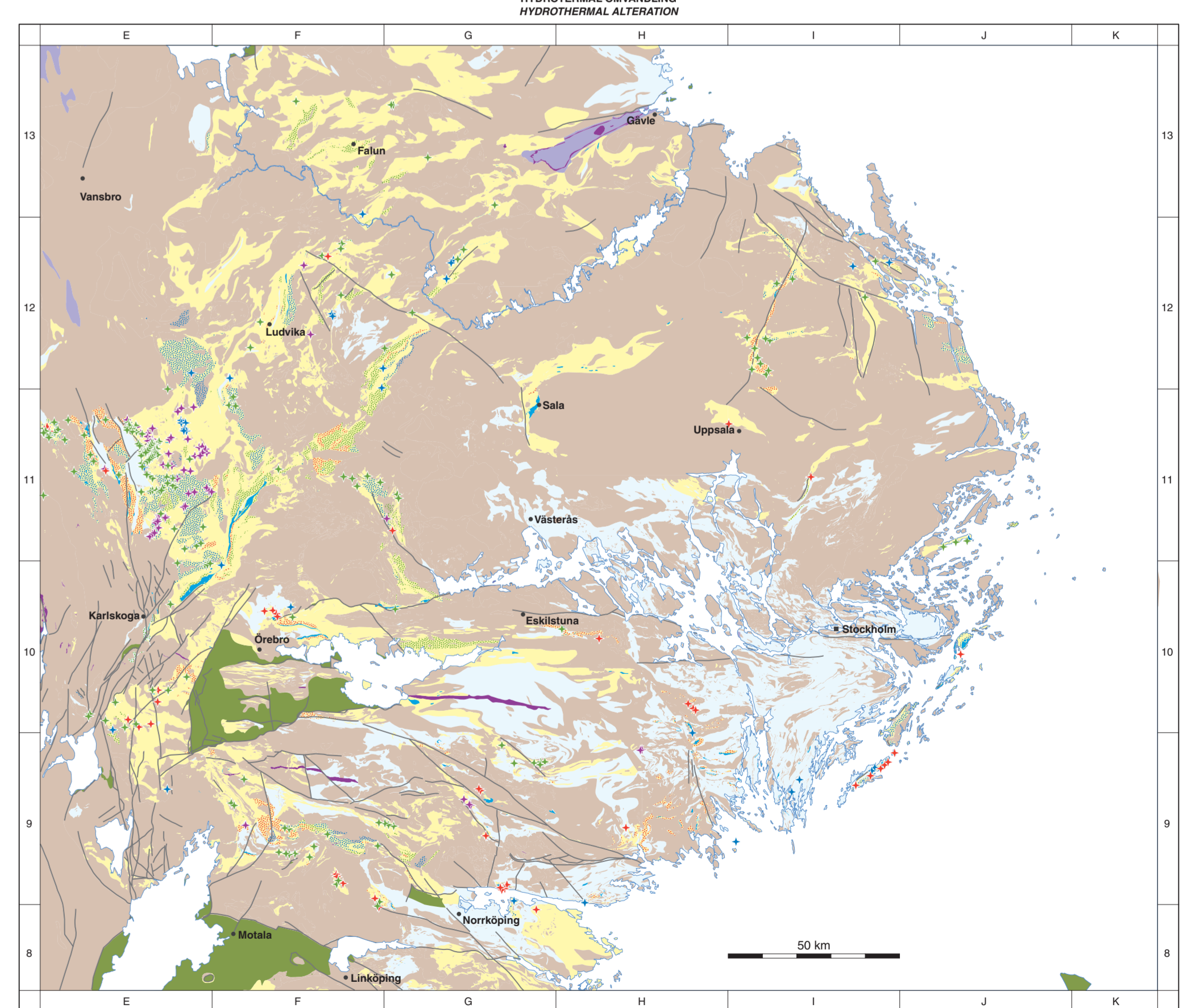
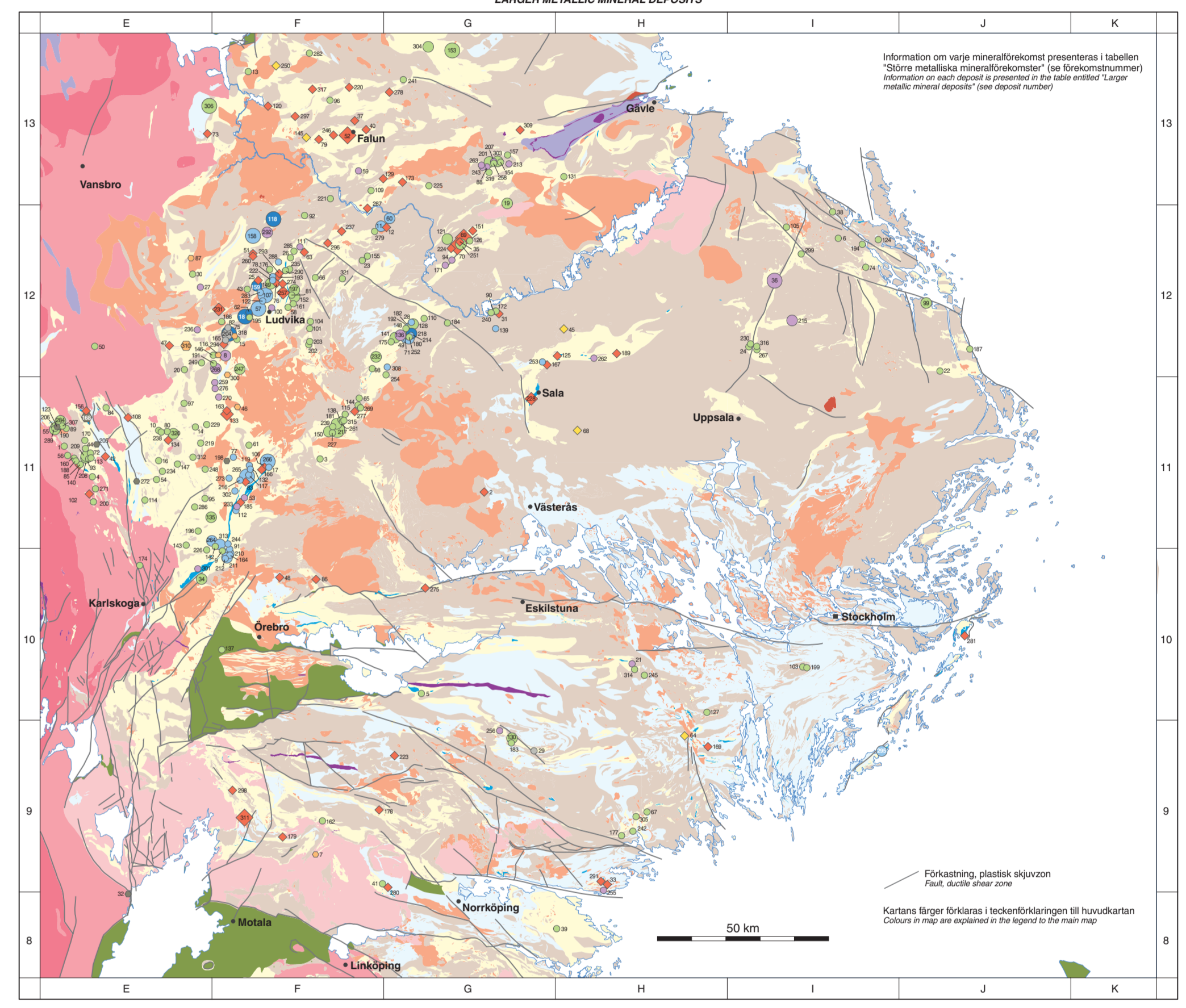
- Legend for sedimentary cover types, including sandstone, siltstone, and shale.

FENOSKANDISKA SKOLDEN / FENOSCANDIAN SHIELD

- Legend for the Fenoscandian Shield, detailing various geological units and their ages.

Mineral- och bergartereförekomster

- Legend for mineral and rock occurrences, including iron, copper, and zinc deposits.



Geological Survey of Sweden (Sveinivå) contact information and address details.

Information about the map's content, including a description of the geological and geophysical data presented.

Reference to the Swedish Geological Survey (Sveinivå) and the map's publication details.

Reference to the map's authors and the geological survey's website.

Reference to the map's authors and the geological survey's website.

Reference to the map's authors and the geological survey's website.

Reference to the map's authors and the geological survey's website.