

SVERIGES GEOLOGISKA UNDERSÖKNING

SERIE C AVHANDLINGAR OCH UPPSATSER NR 596

EBBE ZACHRISSON

THE REMDALEN SYNCLINE

STRATIGRAPHY AND TECTONICS

PLATES I—IX

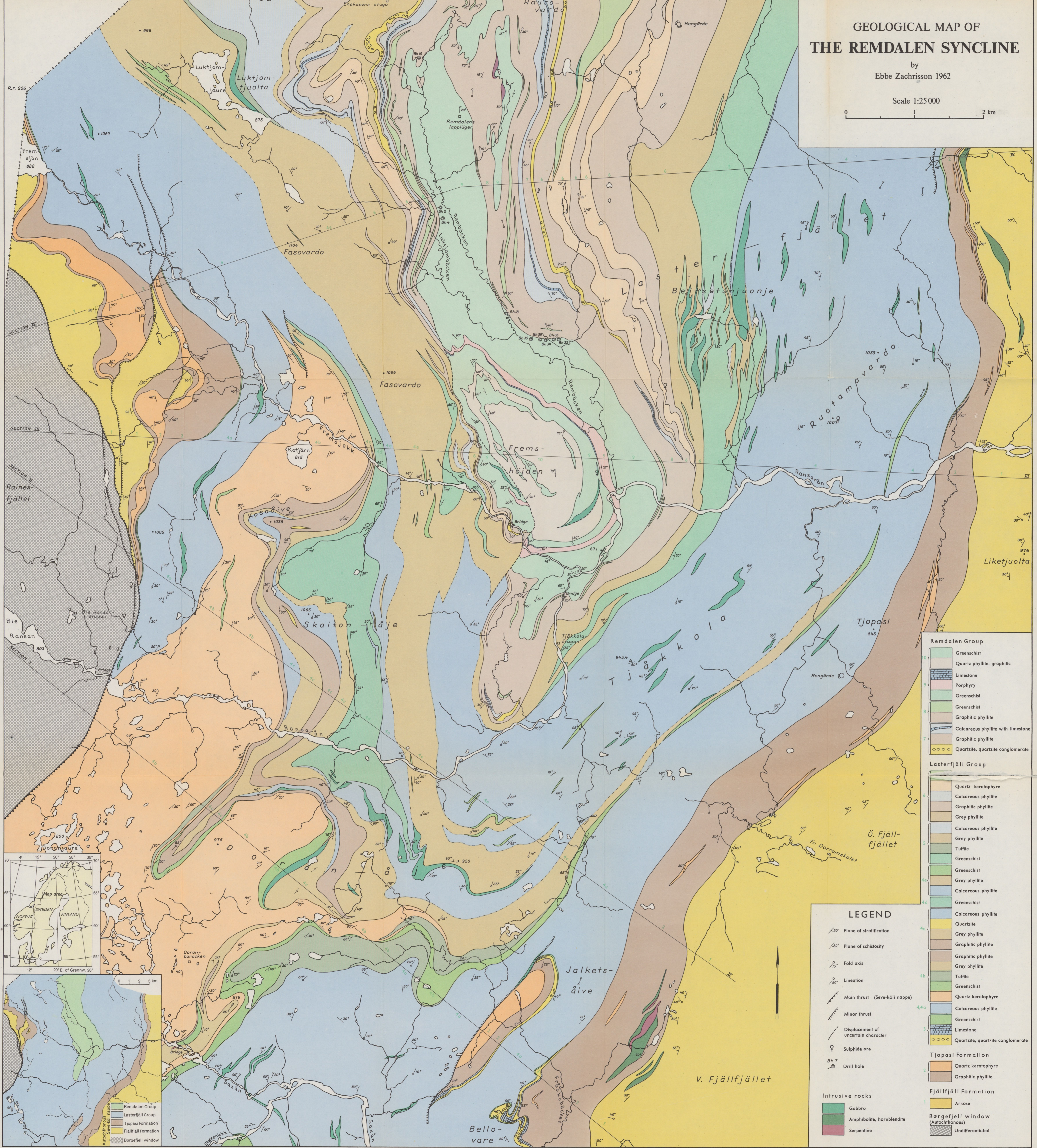
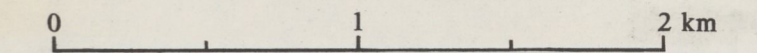


STOCKHOLM 1964

GEOLOGICAL MAP OF THE REMDALEN SYNCLINE

by Ebbe Zachrisson 1962

Scale 1:25 000



Remdalen Group

- 10 Greenschist
- 9 Quartz phyllite, graphitic
- 8 Limestone
- 7 Porphyry
- 6 Greenschist
- 5 Graphitic phyllite
- 4 Calcareous phyllite with limestone
- 3 Graphitic phyllite
- 2 Quartzite, quartzite conglomerate

Lasterfjäll Group

- 6 Quartz keratophyre
- 5 Calcareous phyllite
- 4 Graphitic phyllite
- 3 Grey phyllite
- 2 Calcareous phyllite
- 1 Grey phyllite
- 0 Tuffite
- 4a Greenschist
- 4b Grey phyllite
- 4c Calcareous phyllite
- 4d Greenschist
- 4e Calcareous phyllite
- 4f Quartzite
- 4g Grey phyllite
- 4h Graphitic phyllite
- 4i Grey phyllite
- 4j Tuffite
- 4k Greenschist
- 4l Grey phyllite
- 4m Calcareous phyllite
- 4n Greenschist
- 4o Quartz keratophyre
- 4p Calcareous phyllite
- 4q Greenschist
- 4r Limestone
- 4s Quartzite, quartzite conglomerate

Tjopasi Formation

- 2 Quartz keratophyre
- 1 Graphitic phyllite

Fjällfjäll Formation

- 1 Arkose

Bergefjäll window (Aulachthonous)

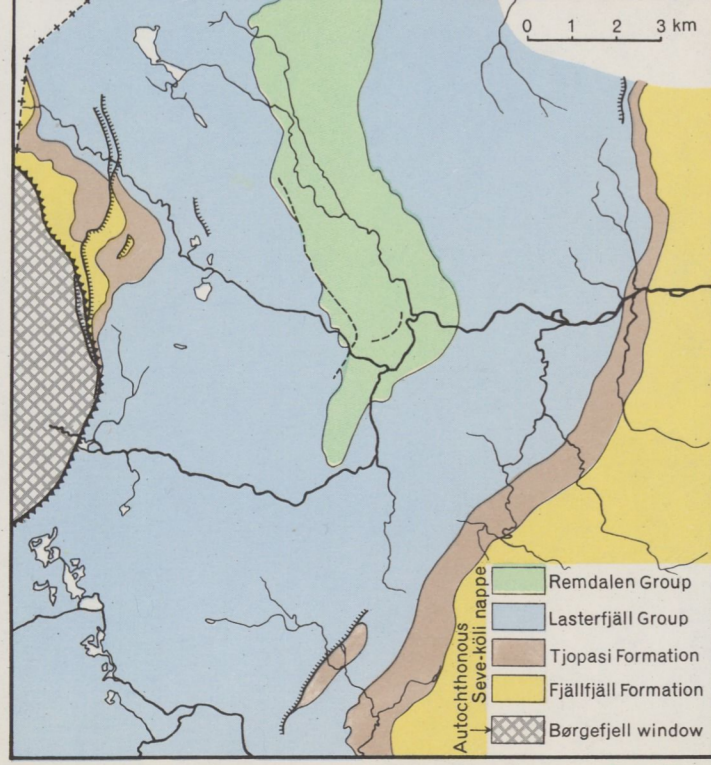
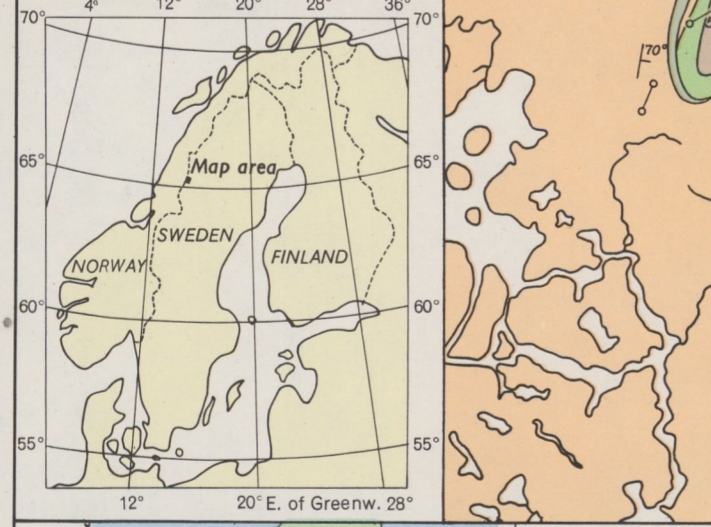
- Undifferentiated

LEGEND

- $\angle 30^\circ$ Plane of stratification
- $\angle 60^\circ$ Plane of schistosity
- $\curvearrowright 15^\circ$ Fold axis
- \rightarrow Lincation
- \rightarrow Main thrust (Seve-köll nappe)
- \rightarrow Minor thrust
- \rightarrow Displacement of uncertain character
- \circ Sulphide ore
- \circ Drill hole

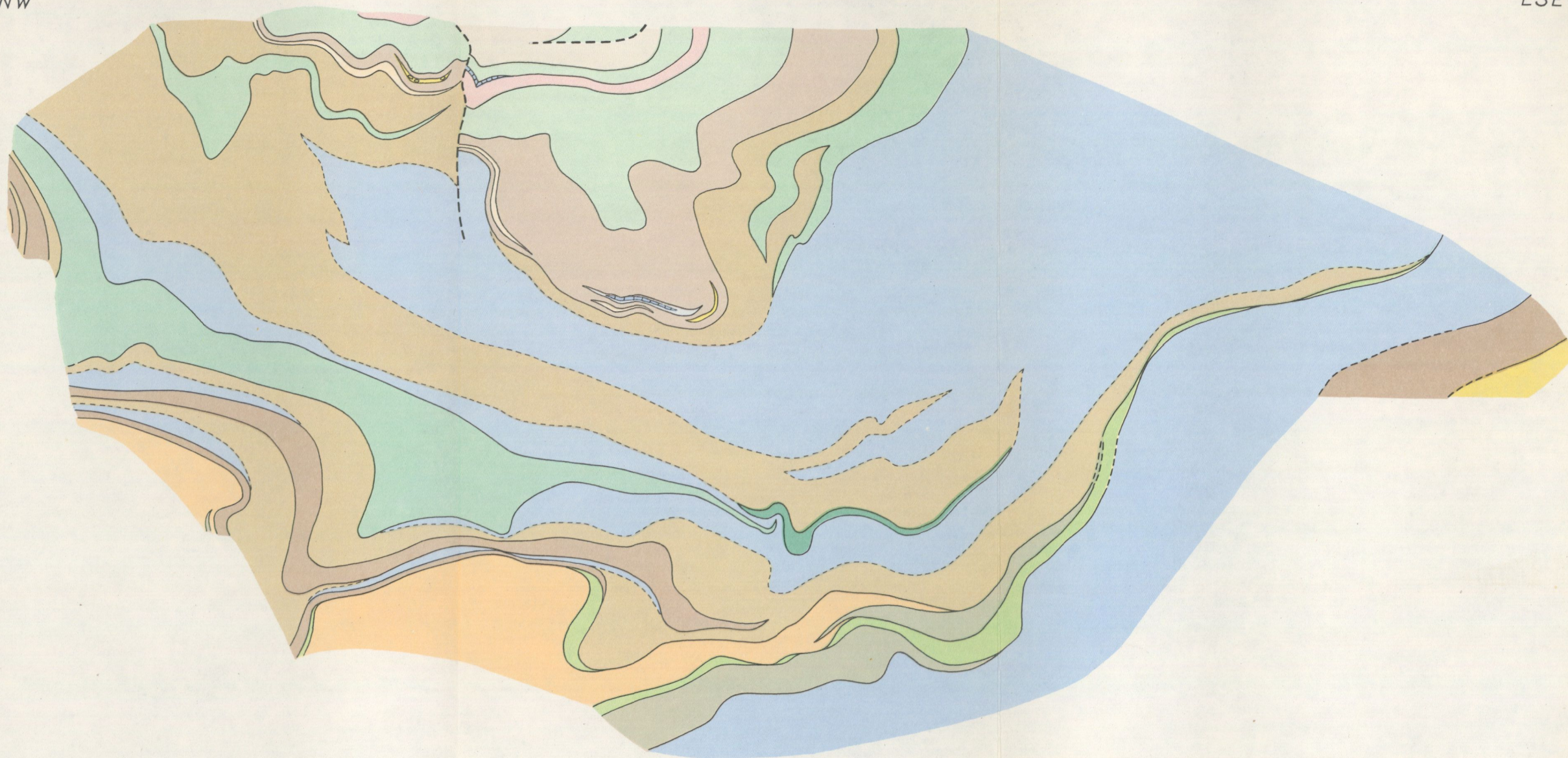
Intrusive rocks

- Gabbro
- Amphibolite, hornblendite
- Serpentine



WNW

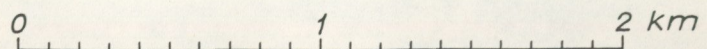
ESE

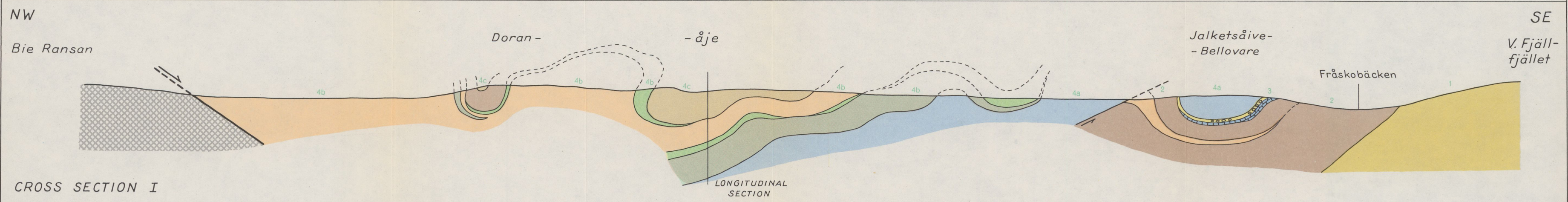
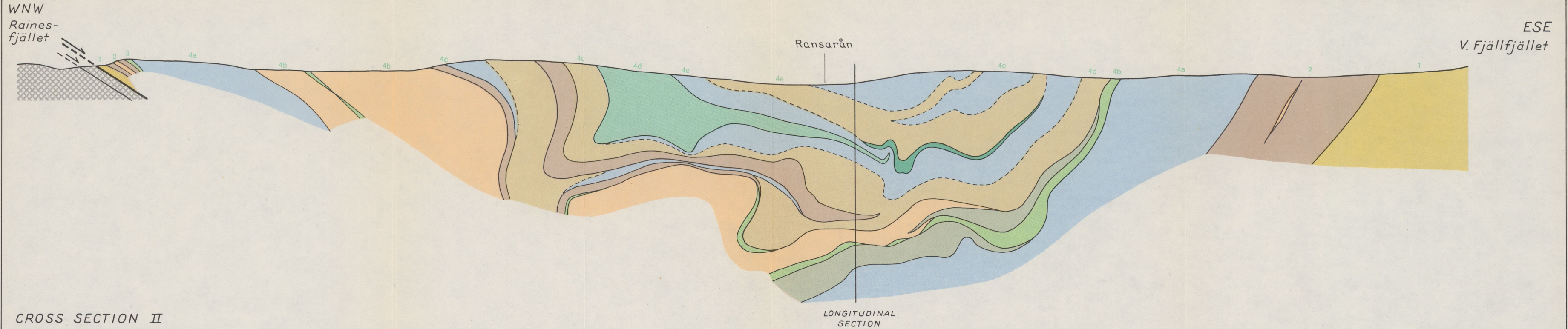


CROSS SECTION THROUGH THE SOUTHERN PART OF THE REMDALEN SYNCLINE

Perpendicular to the deduced fold axes. According to the method of Eklund-Saksela. Legend: see Plate I. Ebbe Zachrisson 1962.

Horizontal and vertical scale 1:25 000





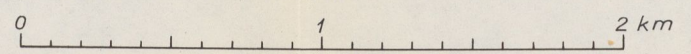
LEGEND: See Plate I

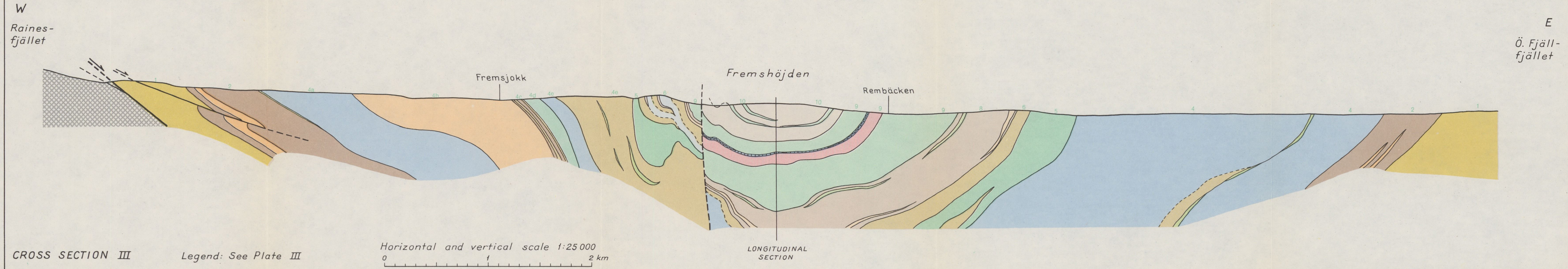
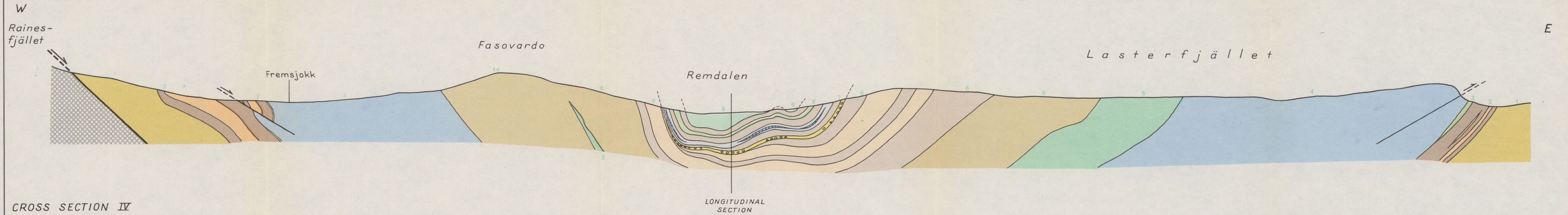
- Main thrust
- Minor thrust
- Other displacement

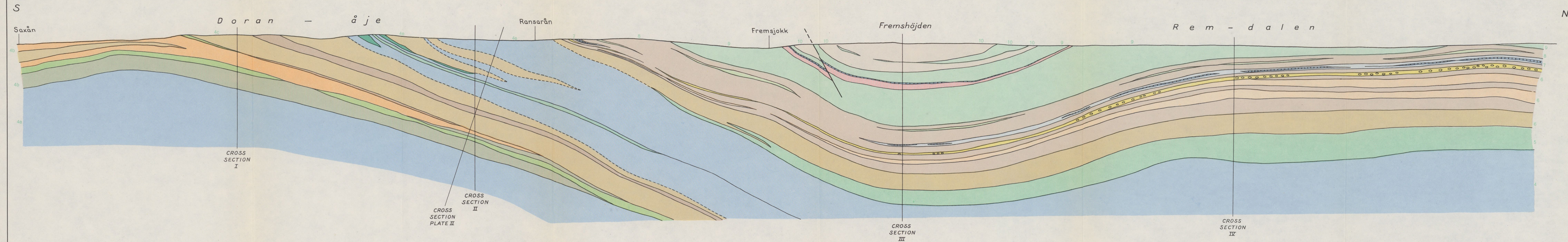
SCHEMATIC CROSS SECTION I-IV THROUGH THE REMDALEN SYNCLINE

By Ebbe Zachrisson 1962

Horizontal and vertical scale 1:25 000





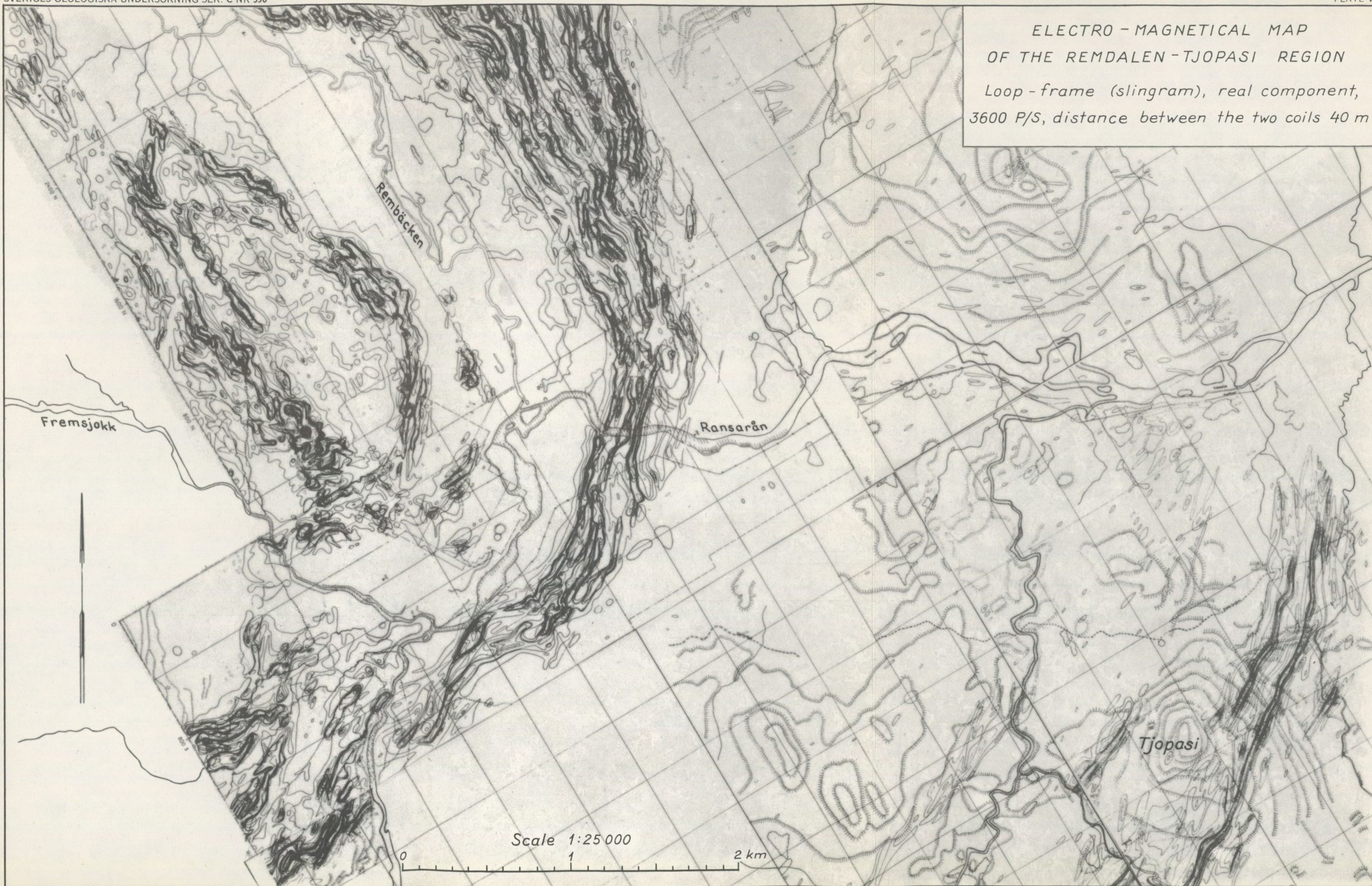


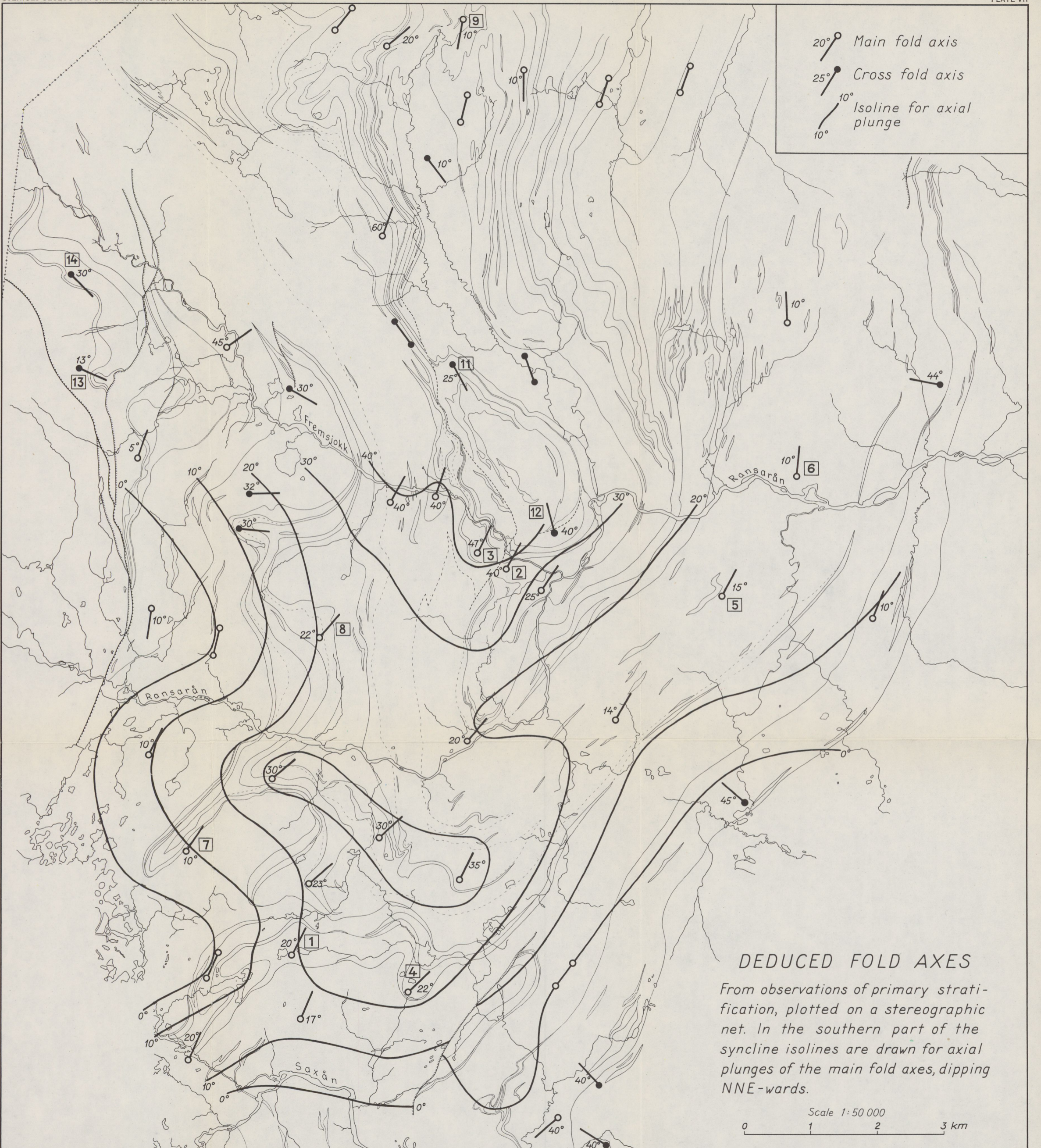
Horizontal and vertical scale 1:25 000
 0 1 2 km

Legend: See Plate III

SCHMATIC LONGITUDINAL SECTION
 THROUGH THE REMDALEN SYNCLINE
 By Ebbe Zachrisson 1962

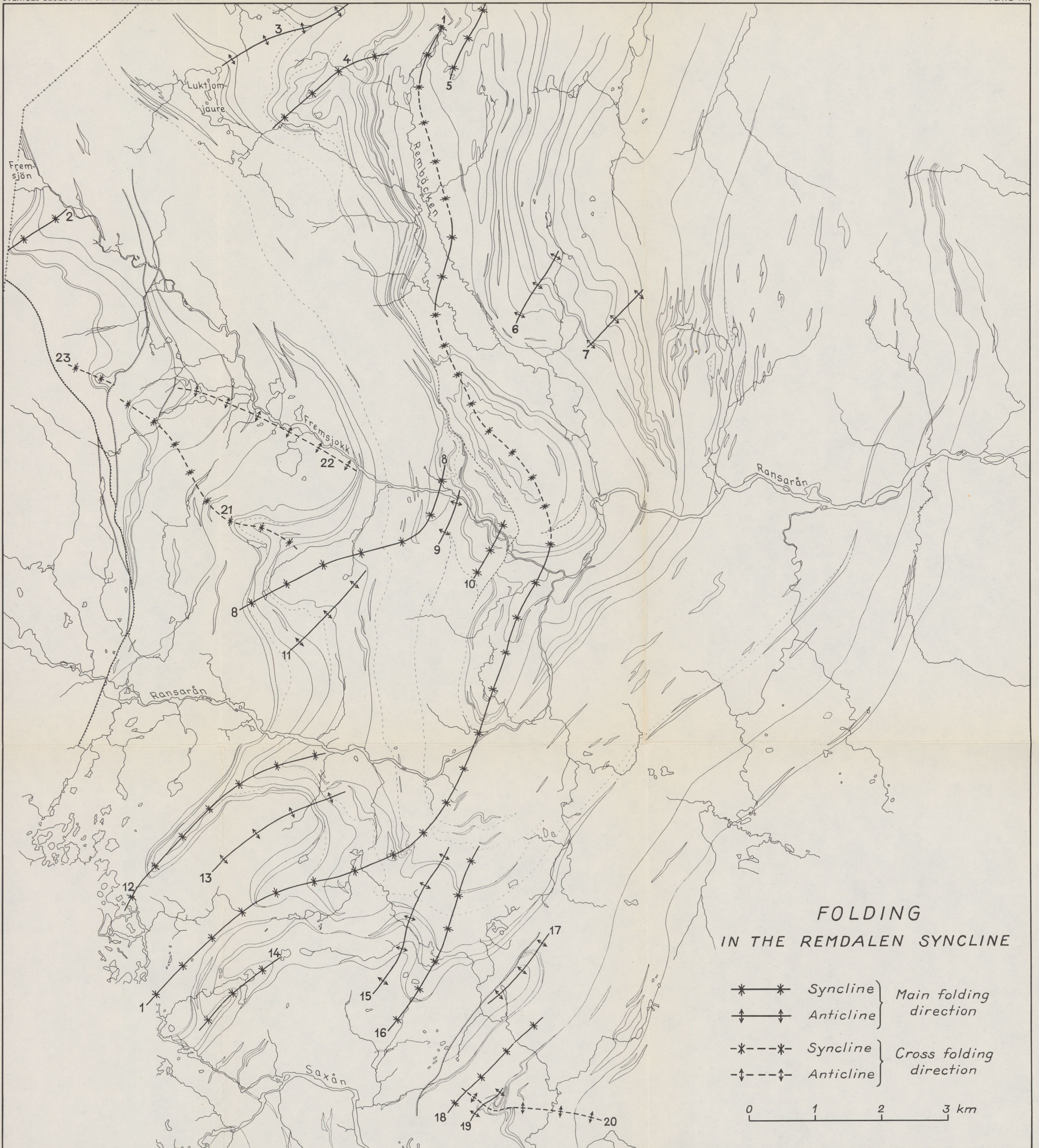
ELECTRO - MAGNETICAL MAP
OF THE REMDALEN - TJOPASI REGION
Loop - frame (slingram), real component,
3600 P/S, distance between the two coils 40 m





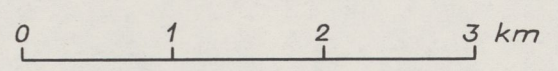
DEDUCED FOLD AXES

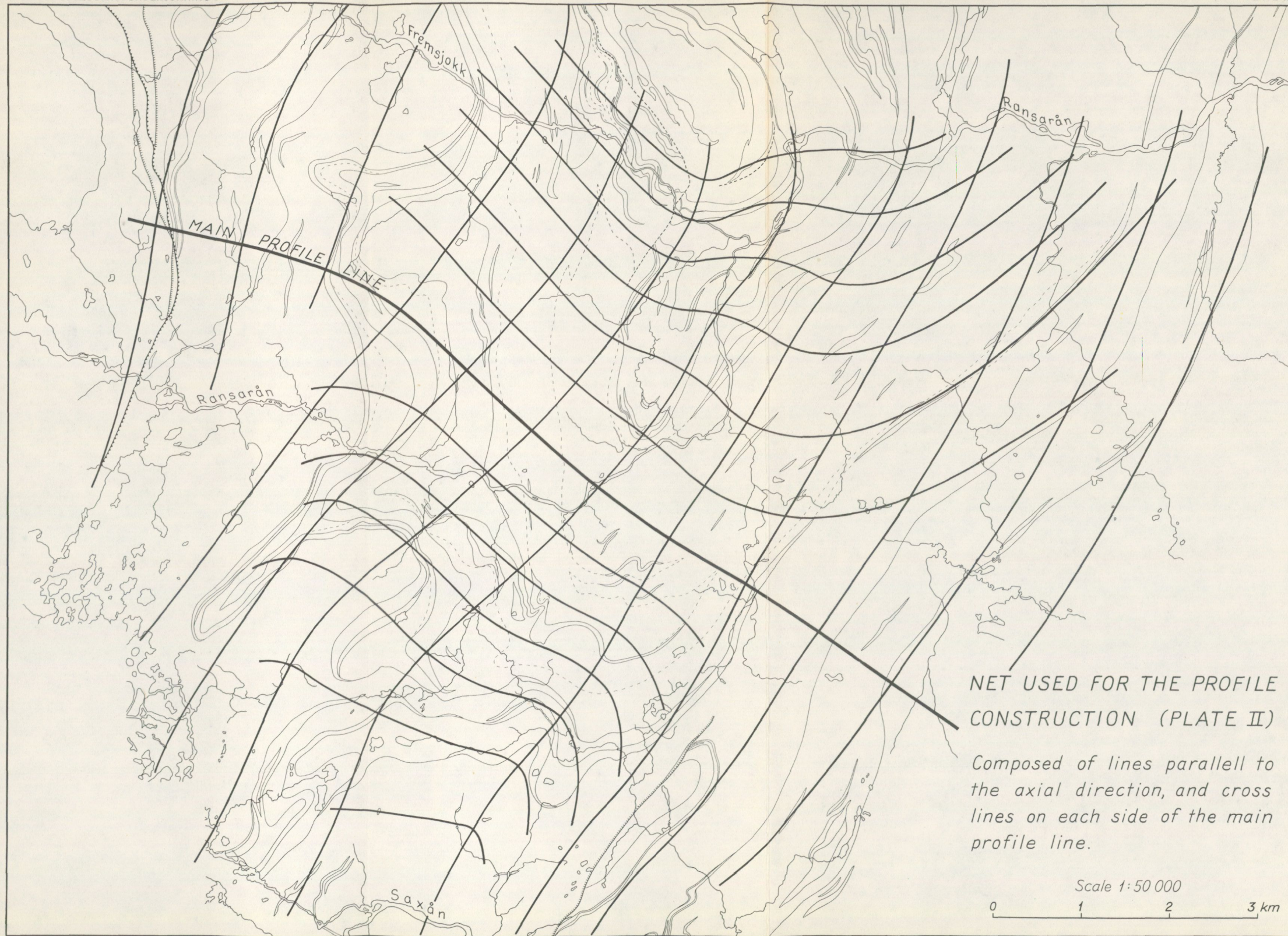
From observations of primary stratification, plotted on a stereographic net. In the southern part of the syncline isolines are drawn for axial plunges of the main fold axes, dipping NNE-wards.



FOLDING
IN THE REMDALEN SYNCLINE

- *—* Syncline } Main folding direction
- ↑—↑ Anticline } Main folding direction
- *---* Syncline } Cross folding direction
- ↑---↑ Anticline } Cross folding direction





NET USED FOR THE PROFILE
CONSTRUCTION (PLATE II)

*Composed of lines parallel to
the axial direction, and cross
lines on each side of the main
profile line.*

Scale 1:50 000

0 1 2 3 km

Distribueras genom
GENERALSTABENS LITOGRAFISKA ANSTALTS FÖRLAG
STOCKHOLM 1

STOCKHOLM 1964. KUNGL. BOKTRYCKERIET P. A. NORSTEDT & SÖNER
PRINTED IN SWEDEN