

RUDYARD FRIETSCH

BERGGRUND OCH MALMER
I SVAPPAVAARAFÄLTET,
NORRA SVERIGE

GEOLOGY AND ORES OF THE
SVAPPAVAARA AREA, NORTHERN SWEDEN
PLANSCHERNA 1—5
PLATES 1—5



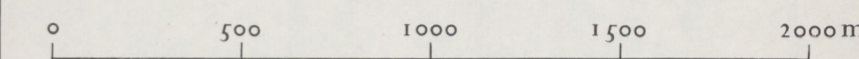
STOCKHOLM 1966

BERGGRUNDKARTA ÖVER SVAPPAVAARA-FÄLTET

GEOLOGICAL MAP OF THE SVAPPAVAARA AREA

R. Frietsch 1965

Skala 1:20 000



- Leukodiabas
Leucodiorite
- Grönsten, gångar i granit
Greenstone, dikes in granite
- Granit och pegmatit
Granite and pegmatite
- Biotitgnejs
Biotite gneiss
- Metabasit, gångar i leptit
Metabasite, dikes in leptite
- Sericitiskiffer
Sericitic schist
- Granodiorit
Granodiorite
- Syenit
Syenite
- Gabbro
Gabbro
- Andesinporfyr
Andesine porphyrite
- Andesinporfyr, gångar
Andesine porphyrite, dikes
- Kvartsilandssten
Quartzitic sandstone
- Konglomerat i kvartsilandssten
Conglomerate in quartzitic sandstone
- Sur-intermediär bandad leptit
Acid-intermediate banded leptite
- Konglomerat i sur-intermediär bandad leptit
Conglomerate in acid-intermediate banded leptite
- Basisk bandad leptit
Basic banded leptite
- Konglomerat i basisk bandad leptit
Conglomerate in basic banded leptite
- Skarn i Svappavaaragruppen
Skarn in the Svappavaara group
- Kalksten
Limestone
- Amfibolskiffer
Amphibolite schist
- Skapolitess
Scapolitess
- Biotitrik kvarbit
Biotite-rich quartzite
- Graffitfärande skiffer
Graphite-bearing schist
- Basisk tuffit
Basic tuffite
- Kvartsfärande porfyr
Quartz-bearing porphyry
- Syenitporfyr och albitofyr
Syenite-porphyr and albitophyre
- Albitporfyr
Albite porphyrite
- Leptit
Leptite
- Konglomerat i leptit
Conglomerate in leptite
- Skarn i leptit
Skarn in leptite
- Basisk leptit
Basic leptite
- Järnmalm
Iron ore
- Sulfidfyndighet
Sulphide ore deposit
- Strykning och stupning
Strike and dip
- Förkliffning
Schistosity
- Veckaxel
Fold axis
- Stänglighet
Lineation
- Ovansidesbestämning (uppåt i pilens riktning)
Younger beds in direction of arrow
- Förkastning
Fault
- Blotningar
Outcrops
- Lokala block
Local boulders
- Borrhål
Drill-hole
- Stoll
Adit
- Stollmyning
Entrance to adit
- Område med specialkarta
Area with special map
- Profil
Cross section

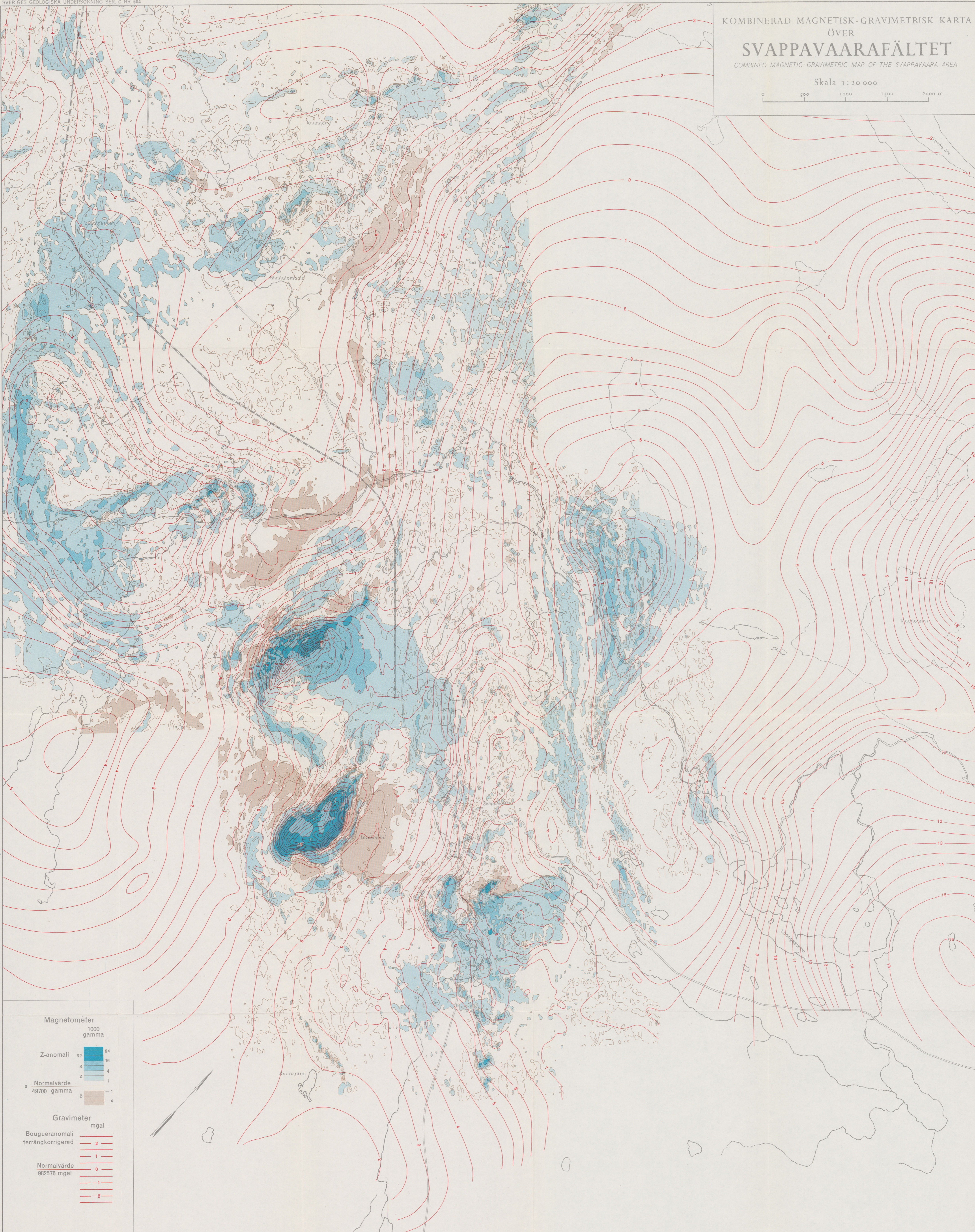
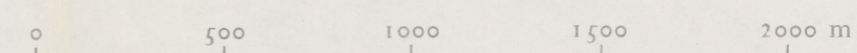
KOMBINERAD MAGNETISK-GRAVIMETRISK KARTA

ÖVER

SVAPPAVAARAFÄLTET

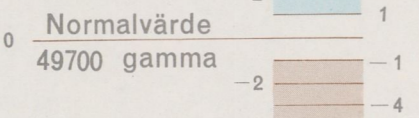
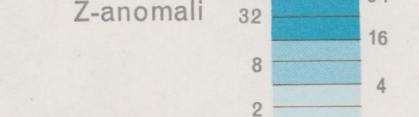
COMBINED MAGNETIC-GRAVIMETRIC MAP OF THE SVAPPAVAARA AREA

Skala 1:20 000



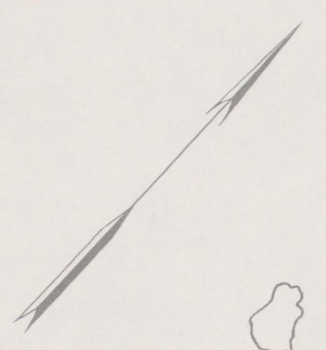
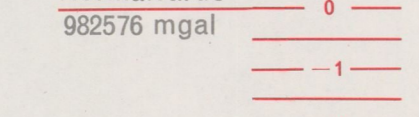
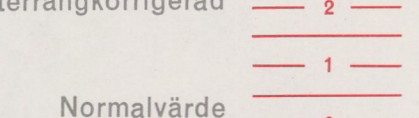
Magnetometer

1000 gamma



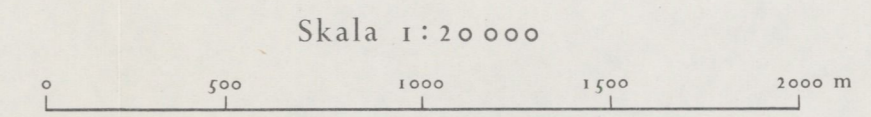
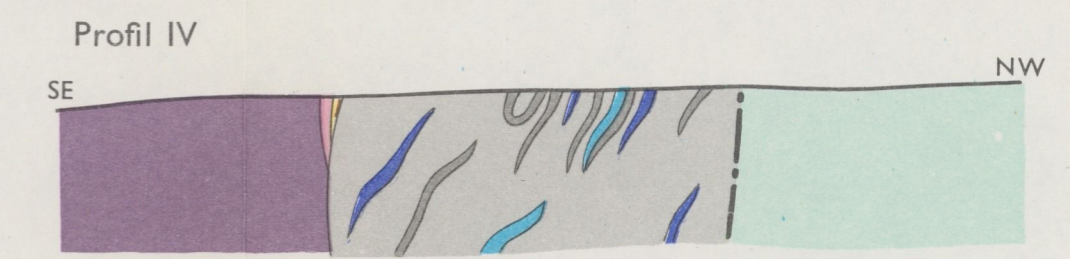
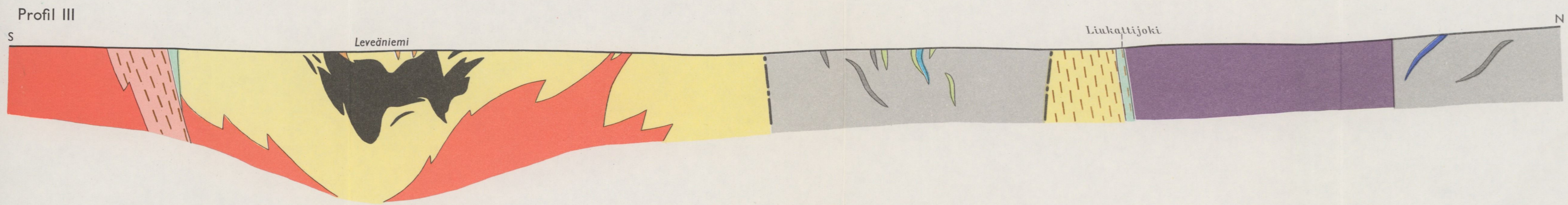
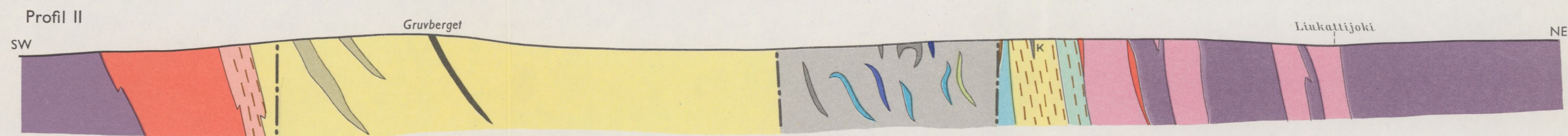
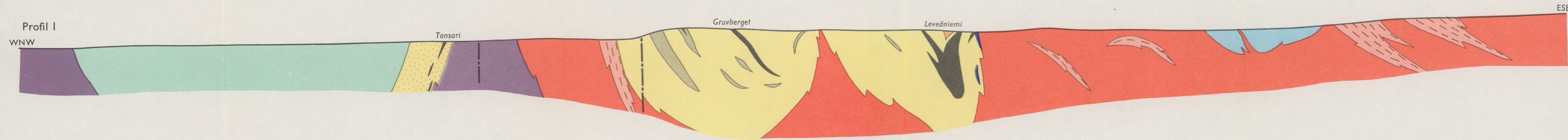
Gravimeter

mgal

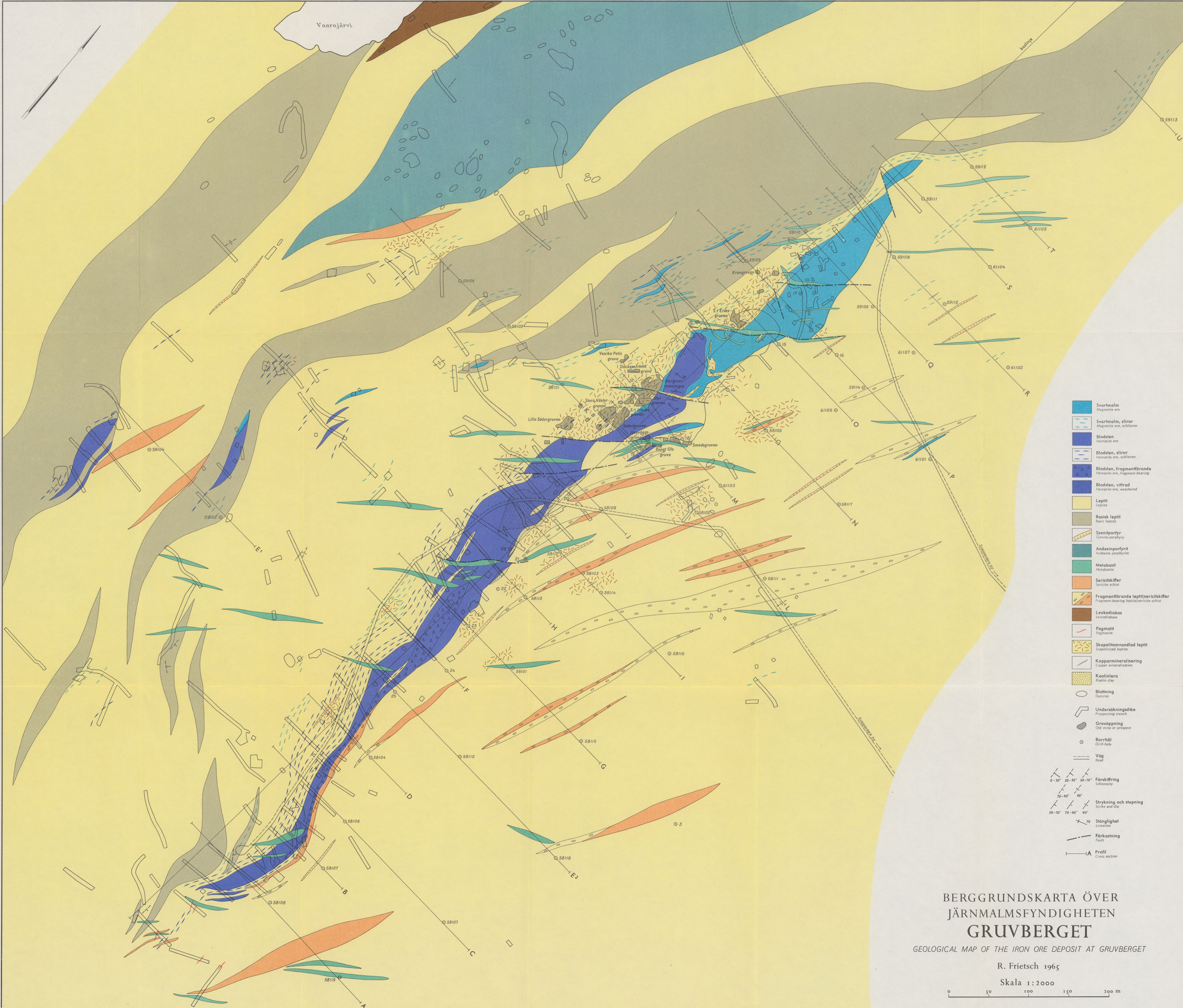


PROFILER GENOM SVAPPAVAARAFÄLTET CROSS SECTIONS THROUGH THE SVAPPAVAARA AREA

R. Frietsch 1965



Teckenförklaring se pl.1 Legend see pl.1



- Svartmalm
Magnetite ore
- Svartmalm, sliror
Magnetite ore, schlieren
- Blodsten
Hematite ore
- Blodsten, sliror
Hematite ore, schlieren
- Blodsten, fragmentfärande
Hematite ore, fragment-bearing
- Blodsten, vittrad
Hematite ore, weathered
- Lepitit
Leptite
- Basisk lepitit
Basic leptite
- Syenitporfyr
Syenite-porphry
- Andesitporfyr
Andesite porphyrite
- Metabasit
Metabasite
- Sericitiskiffer
Sericite schist
- Fragmentfärande lepitit/sericitiskiffer
Fragment-bearing leptite/sericite schist
- Leukodiabas
Leucodiabase
- Pegmatit
Pegmatite
- Skapolitomvandlad lepitit
Scapolitized leptite
- Koppermineralisering
Copper mineralization
- Kaolinlera
Kaolin clay
- Blötning
Outcrop
- Undersökningsdike
Prospecting trench
- Gruvöppning
Old mine or prospect
- Borrhål
Drill-hole
- Väg
Road
- Förskifring
Schistosity
- Strykning och stupning
Strike and dip
- Stänglighet
Lineation
- Förkastning
Fault
- Profil
Cross section

BERGGRUNDSKARTA ÖVER
JÄRNMALMSFYNDIGHETEN
GRUVBERGET
 GEOLOGICAL MAP OF THE IRON ORE DEPOSIT AT GRUVBERGET
 R. Frietsch 1965
 Skala 1:2000
 0 50 100 150 200 m

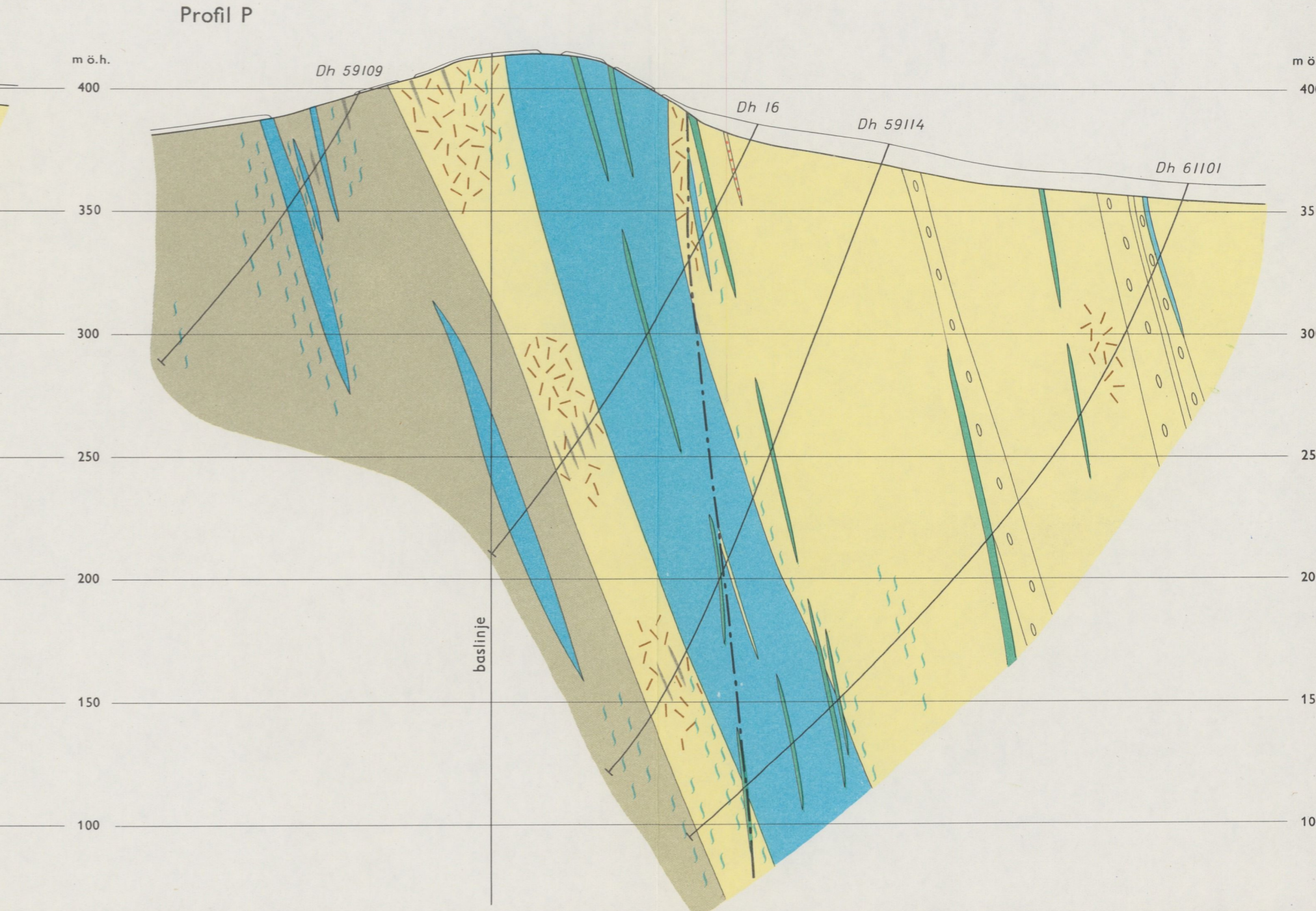
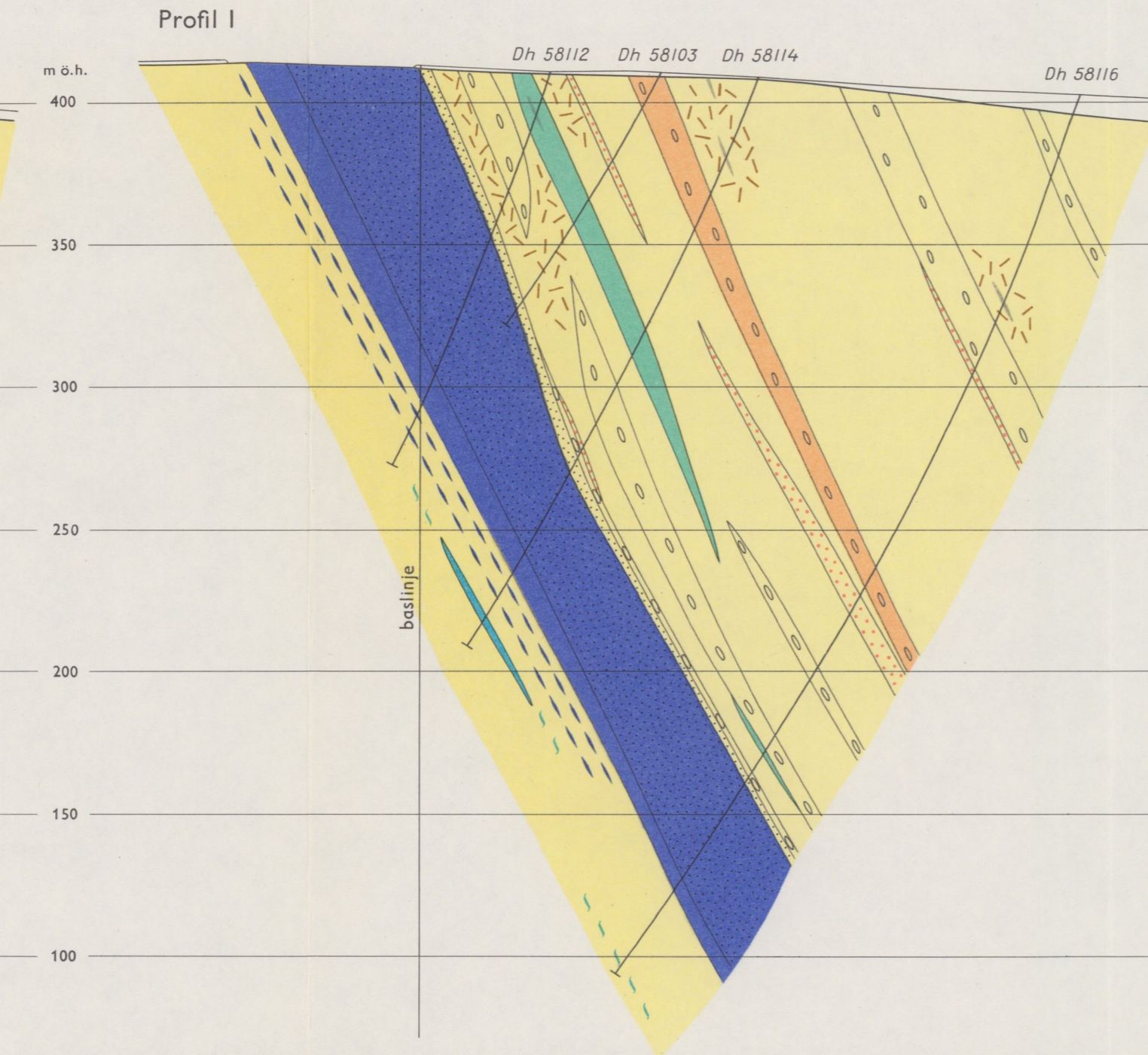
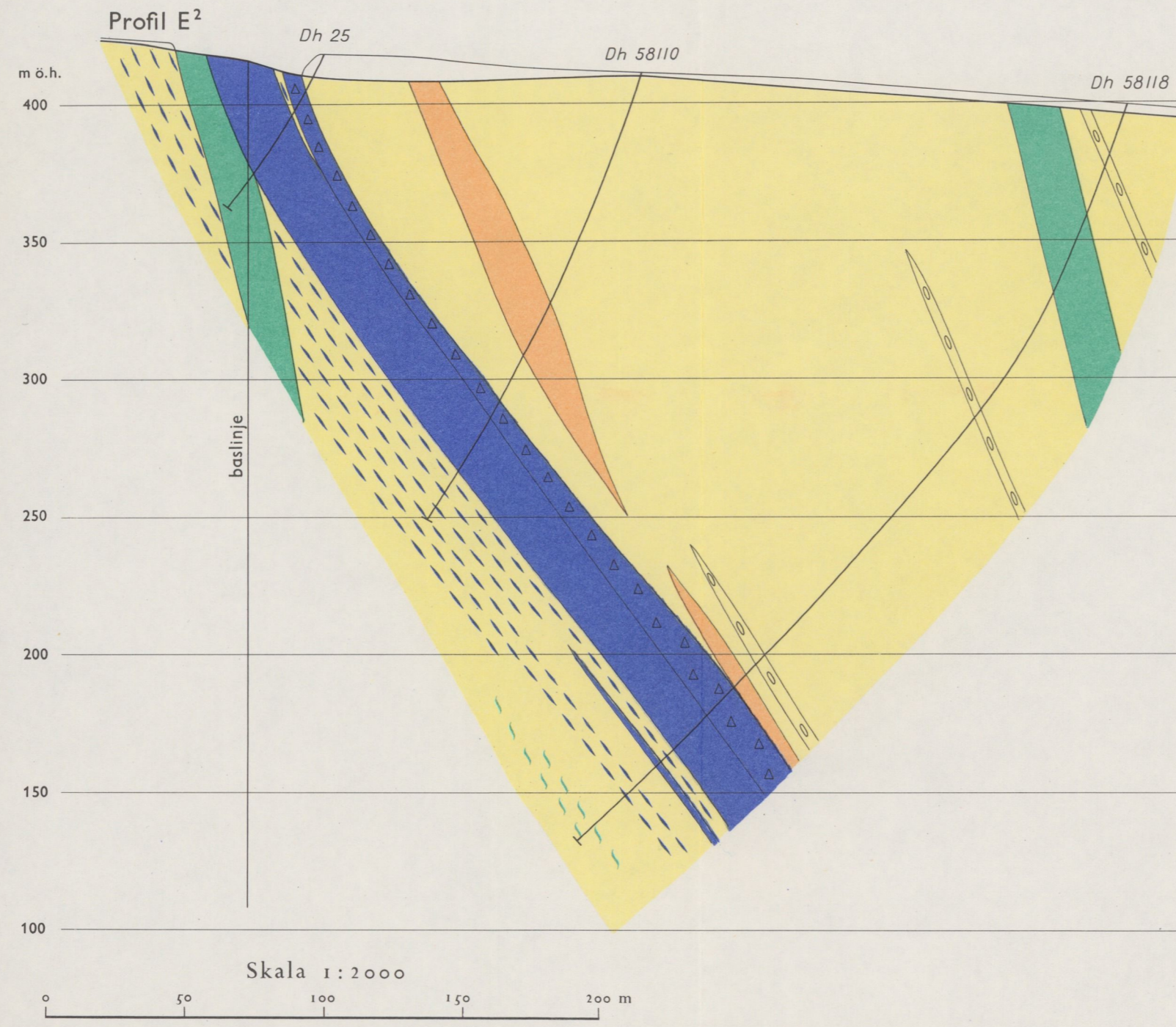
For upplösning godkänd i Rikets allmänna nätverk 12/3 1966

REPRODUCERAD VID AN KARTOGRAFISKA INSTITUTET
STOCKHOLM 1984

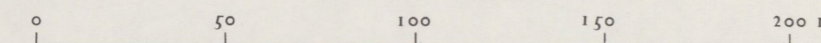
R. Frietsch 1965

W

E



Skala 1:2000



Teckenförklaring se pl. 4 Legend see pl. 4