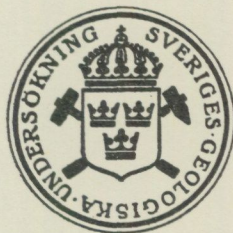


KAJ NILSSON

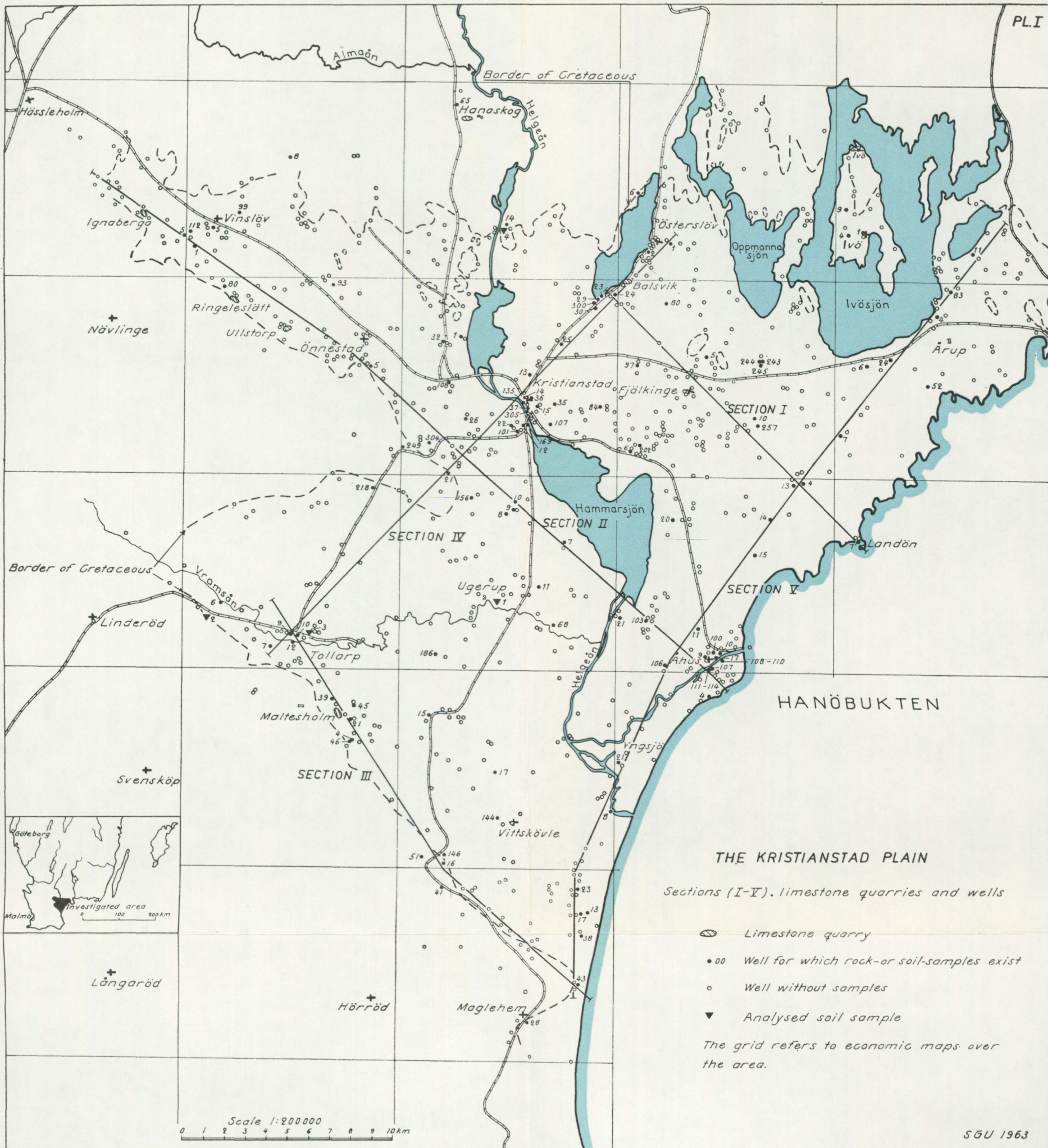
GEOLOGICAL DATA FROM THE
KRISTIANSTAD PLAIN,
SOUTHERN SWEDEN

Plates I–IX

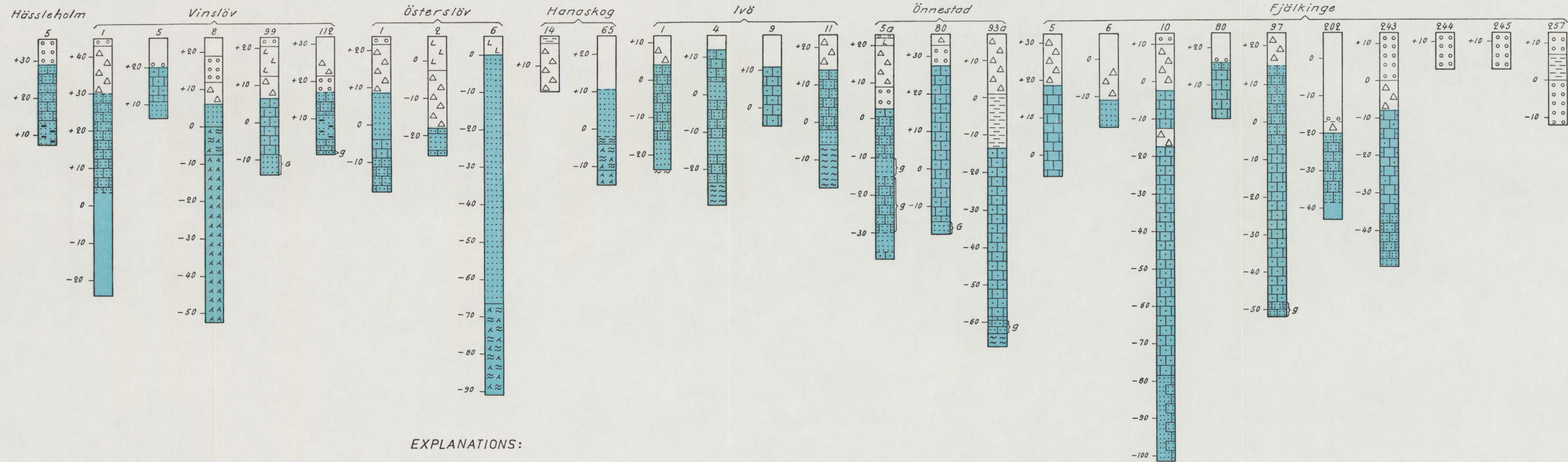


STOCKHOLM 1966

För spridning godkänd i
rikets allmänna kartverk
den 8 december 1966



THE KRISTIANSTAD PLAIN, well sections



EXPLANATIONS:

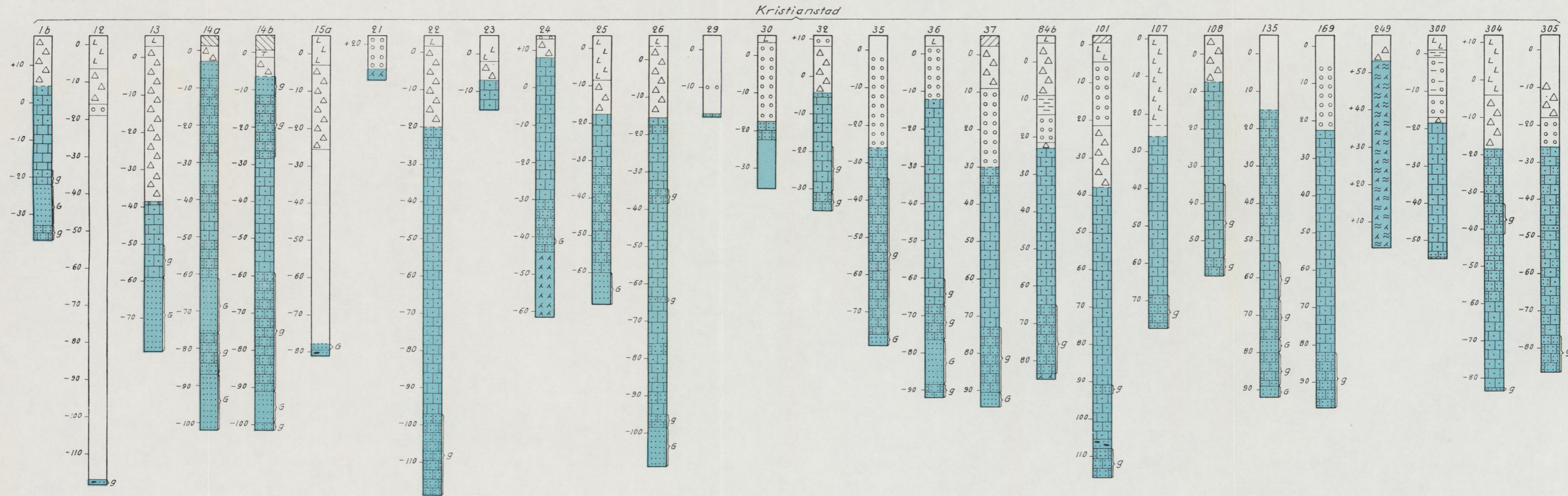
	Particle size mm	Permeability		%carbonate (mainly Ca)
	20 - 200	high-moderate		90 - 100
	2 - 20			50 - 90
	0,2 - 2			10 - 50
	0,06 - 0,2	low		0 - 10
	0,002 - 0,2			0 - 10
	<0,002	very low		
		low-very low		

Schematic boundaries are marked with broken lines.

Transitional types of soils and rocks are marked by combining symbols.

Levels in metres above sea level.

THE KRISTIANSTAD PLAIN, well sections



EXPLANATIONS:

	Particle size mm	Permeability
	20 - 200	high-moderate
	2 - 20	
	0,2 - 2	
	0,06 - 0,2	low
	0,002 - 0,2	
	< 0,002	very low
		low-very low

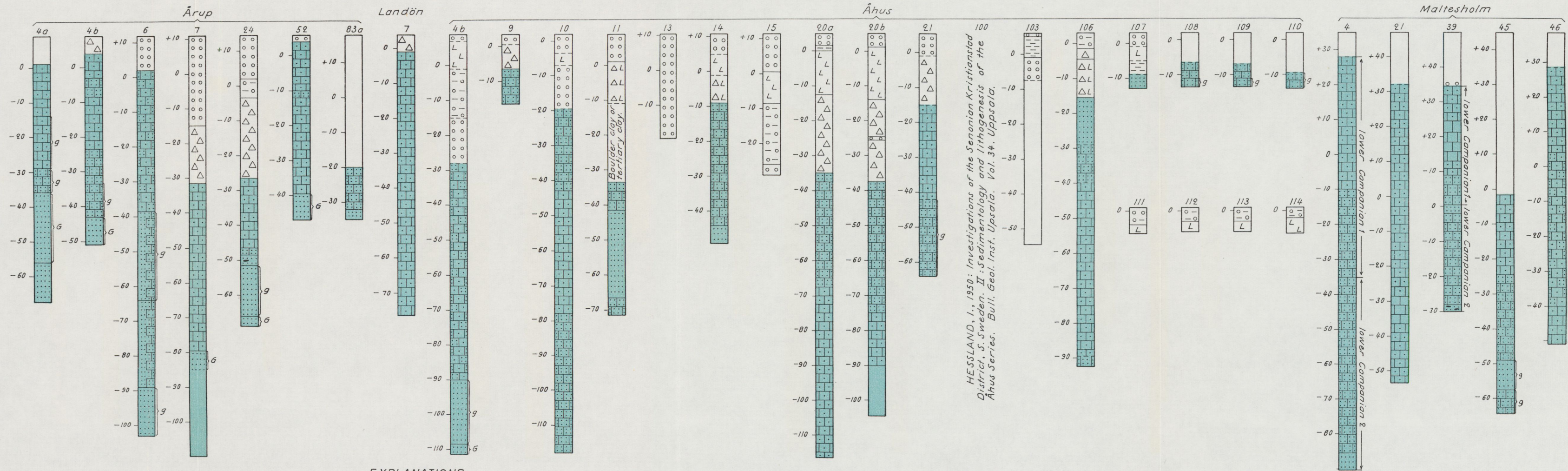
	Limestone	90 - 100
	Sandy limestone	50 - 90
	Calcareous sandstone	10 - 50
	Sandstone	0 - 10
	" — " — " — , glauconitic	0 - 10
	" — " — " — , weakly glauconitic	
	Conglomerate	
	Kaolin	
	Archean bedrock	
	" — " — " — , kaolinized	

Schematic boundaries are marked with broken lines.

Transitional types of soils and rocks are marked by combining symbols.

Levels in metres above sea level.

THE KRISTIANSTAD PLAIN, well sections



HESSLAND, I., 1950: Investigations of the Senonian Kristianstad District, S. Sweden. II: Sedimentology and lithogenesis of the Åhus Series. Bull. Geol. Inst. Uppsala. Vol. 34. Uppsala.

EXPLANATIONS:

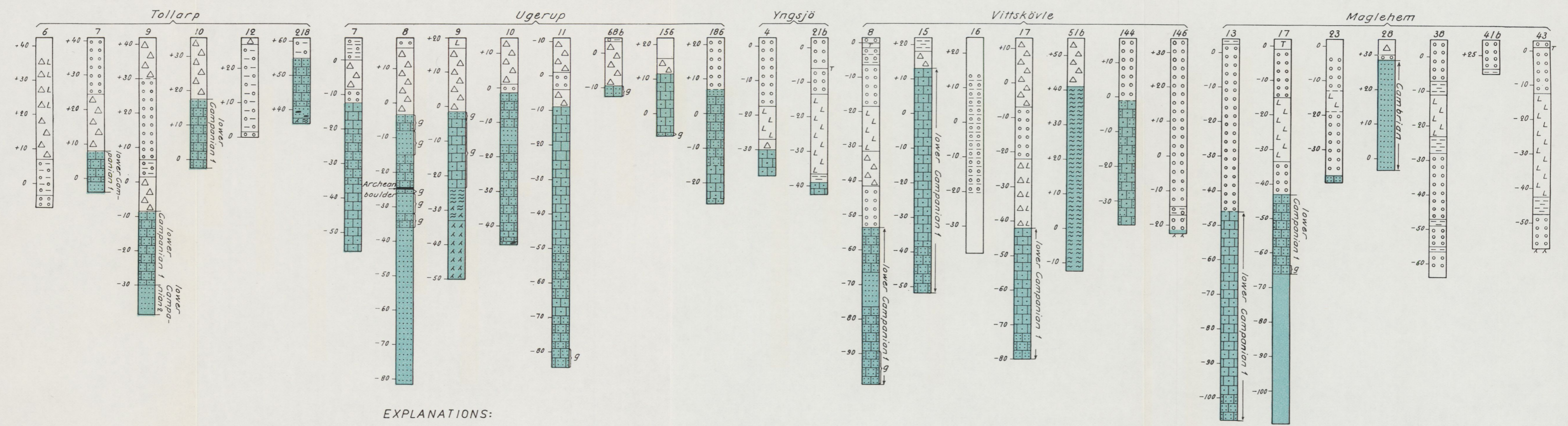
	Particle size mm	Permeability		% carbonate (mainly Ca)	
	Stones	20 - 200		Limestone	90 - 100
	Gravel	2 - 20		Sandy limestone	50 - 90
	Sand	0,2 - 2		Calcareous sandstone	10 - 50
	Fine sand	0,06 - 0,2		Sandstone	0 - 10
	Silt and fine sandy silt	0,002 - 0,2		g — " —, glauconitic	0 - 10
	Clay	< 0,002		Weakly glauconitic	
	Till				Conglomerate
	Boulder clay				Kaolin
	Peat				Archean bedrock
	Fill				" — " —, kaolinized

Schematic boundaries are marked with broken lines.

Transitional types of soils and rocks are marked by combining symbols.

Levels in metres above sea level.

THE KRISTIANSTAD PLAIN, well sections



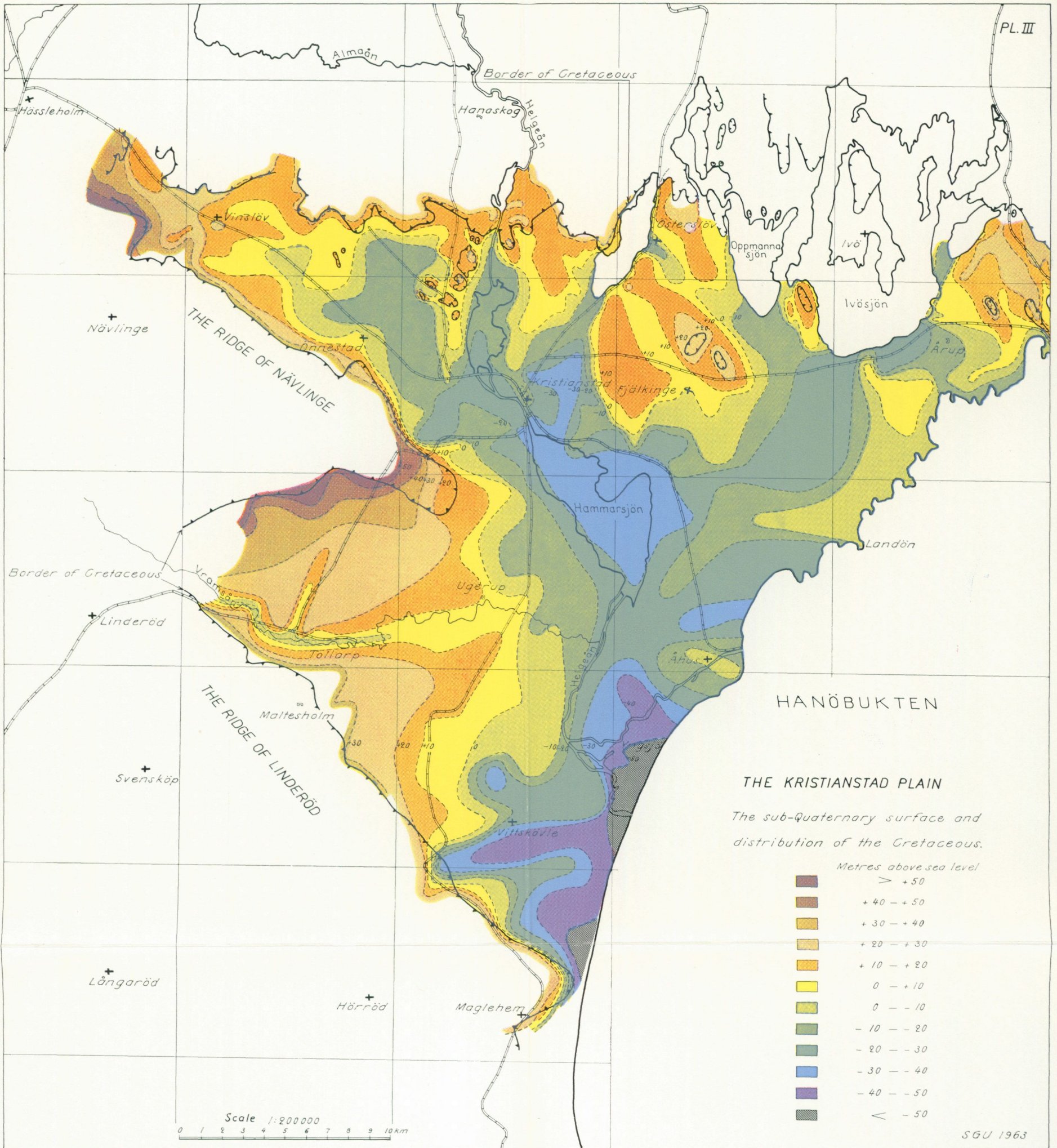
EXPLANATIONS:

Particle size mm		Permeability	% carbonate (mainly Ca)	
	Stones 20-200	high-moderate		Limestone 90-100
	Gravel 2-20			Sandy limestone 50-90
	Sand 0.2-2			Calcareous sandstone 10-50
	Fine sand 0.06-0.2	low		Sandstone 0-10
	Silt and fine sandy silt 0.002-0.2			g " " , glauconitic 0-10
	Clay < 0.002	very low		Weakly glauconitic
	Till	low-very low		Kaolin
	Boulder clay			" " " " , kaolinized
	Peat			
	Fill			

Schematic boundaries are marked with broken lines.

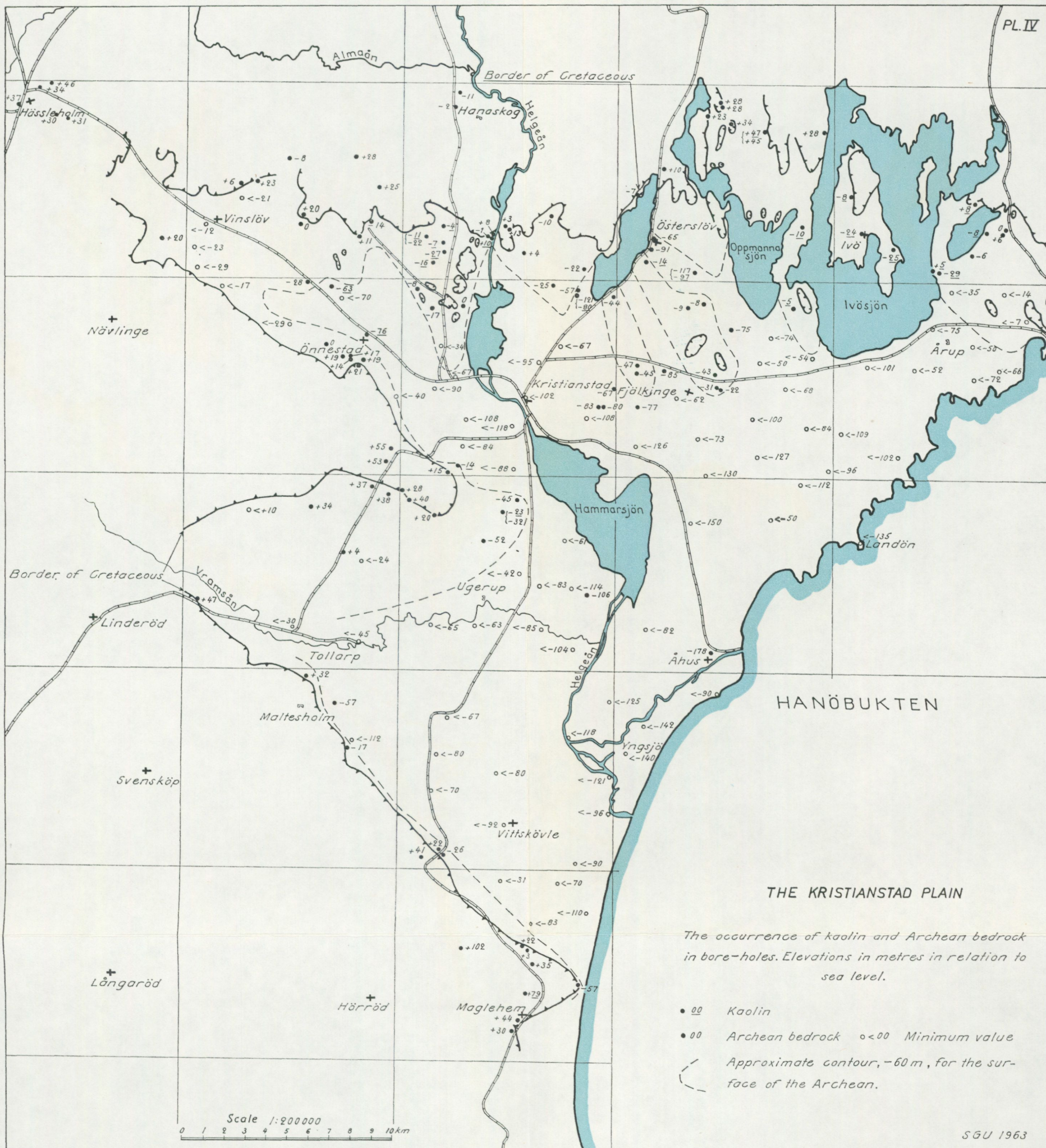
Transitional types of soils and rocks are marked by combining symbols.

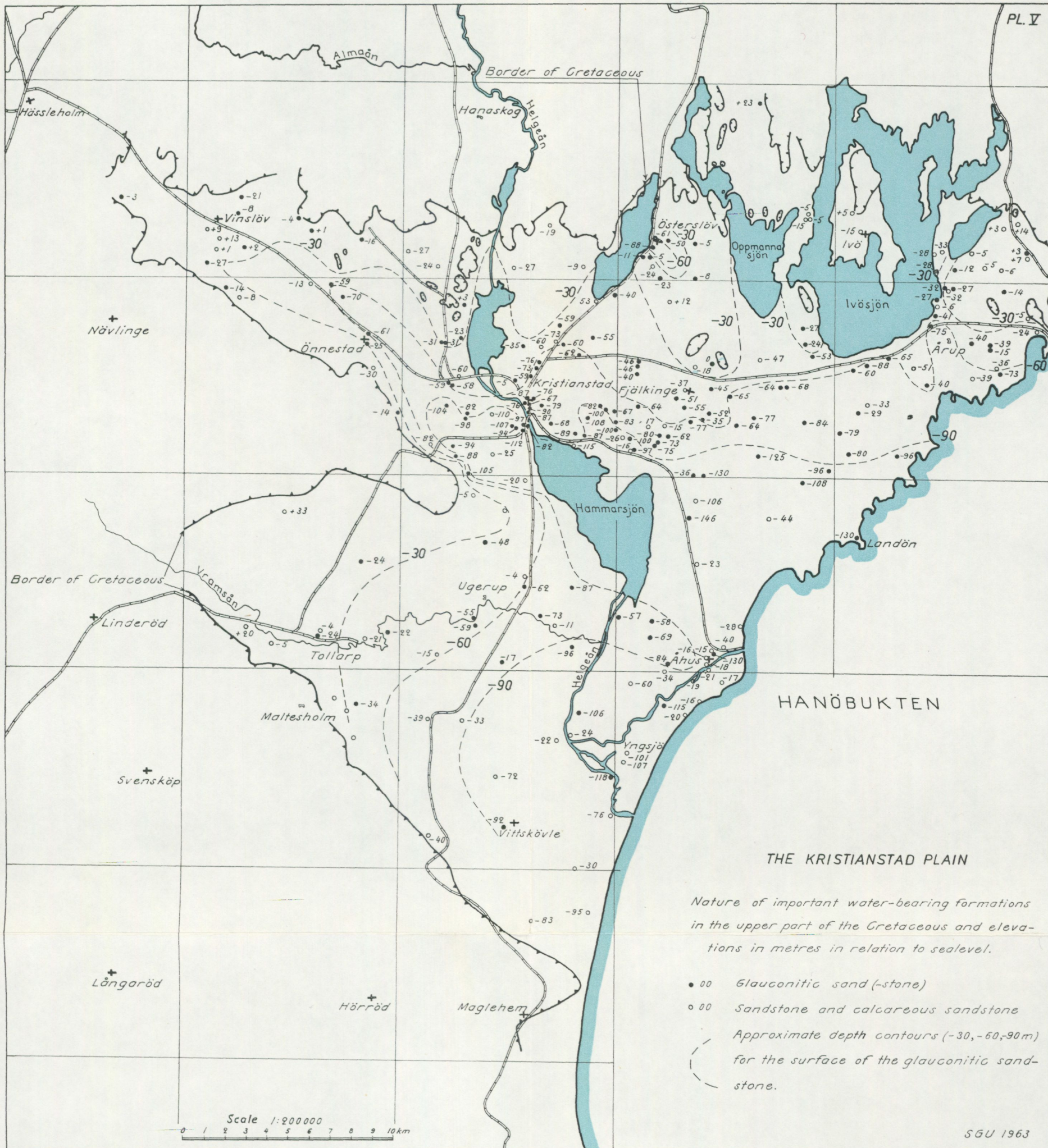
Levels in metres above sea level.

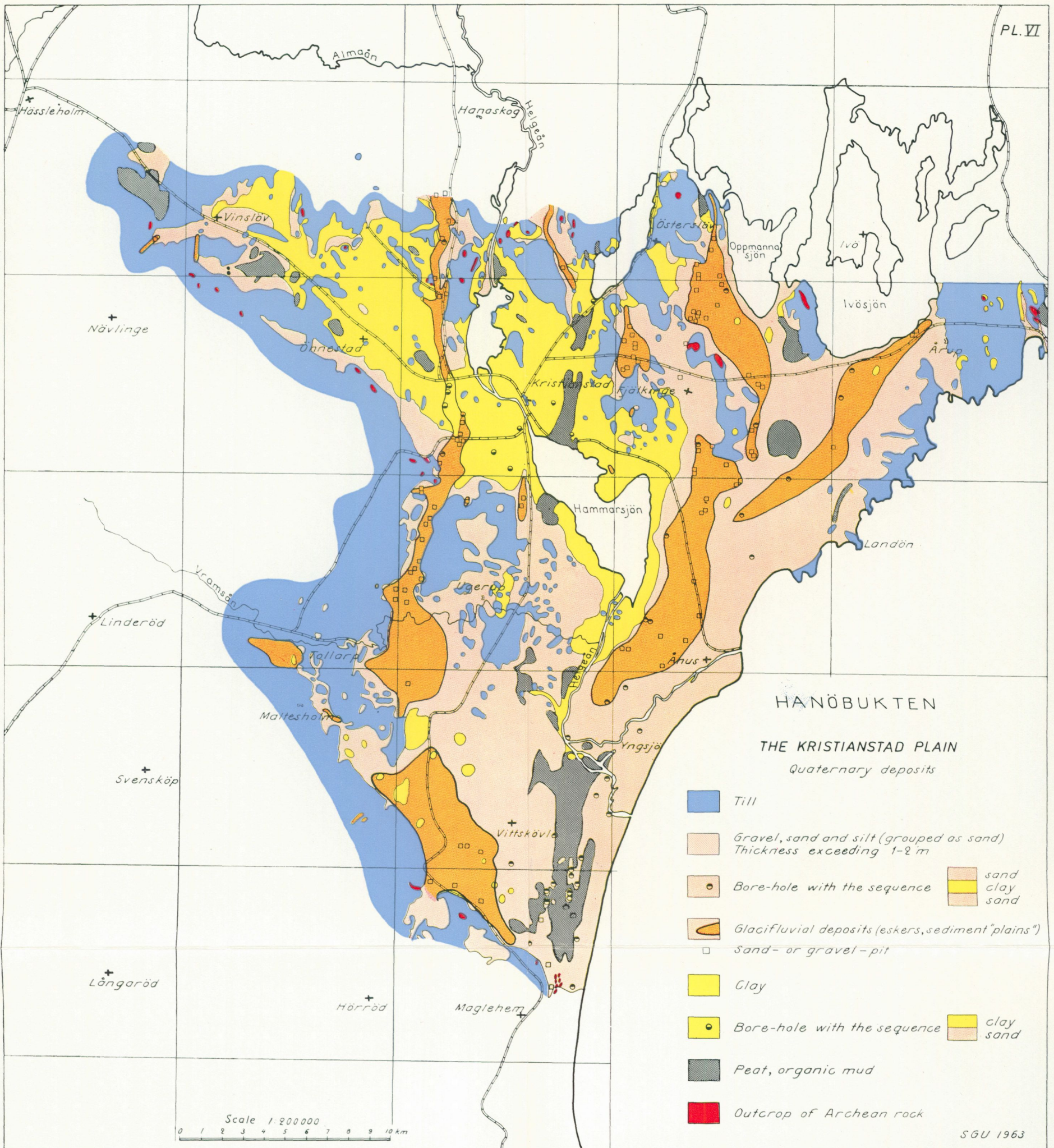


SGU 1963

Kaj Nilsson

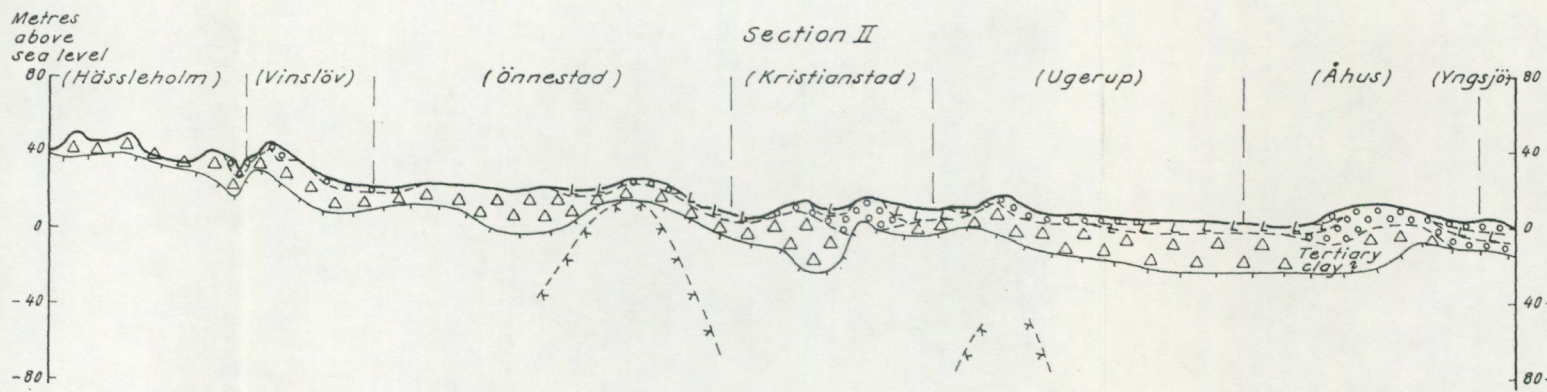
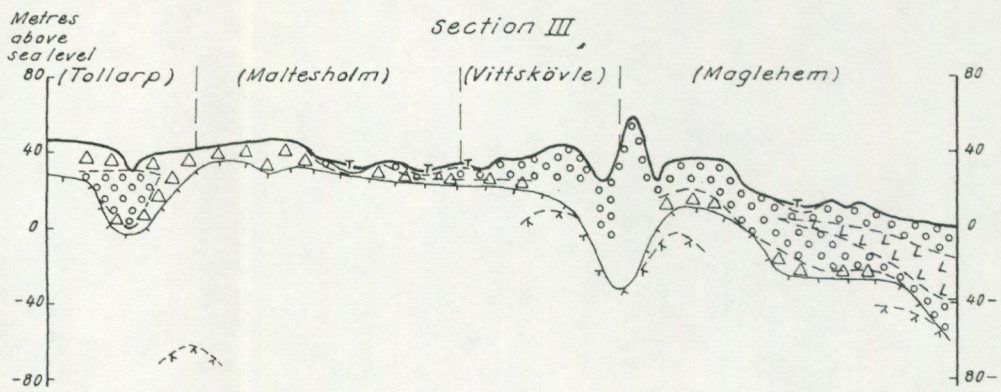






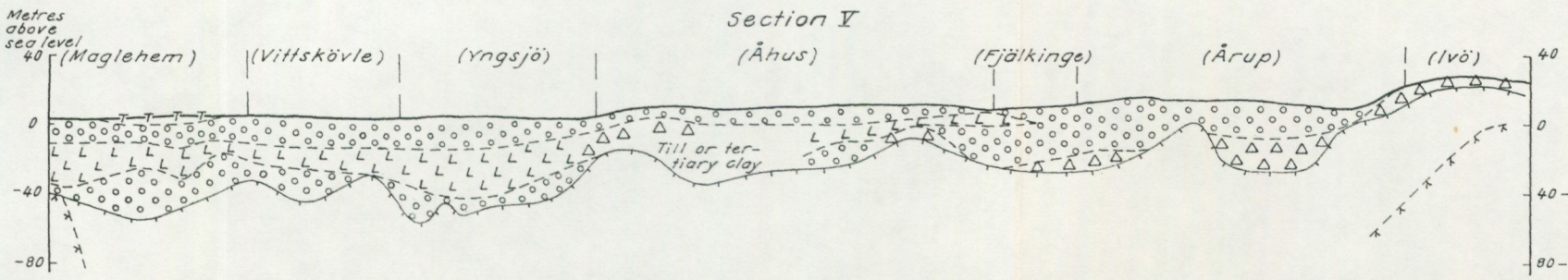
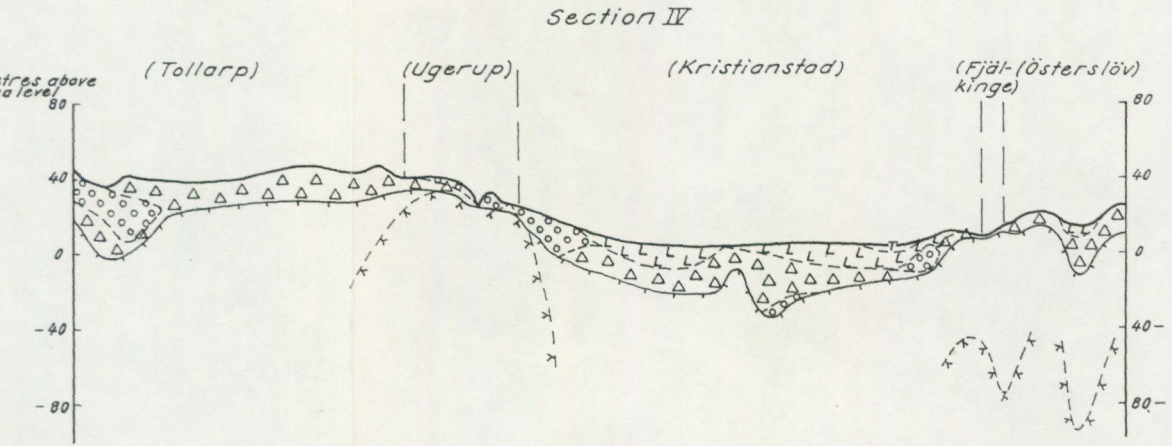
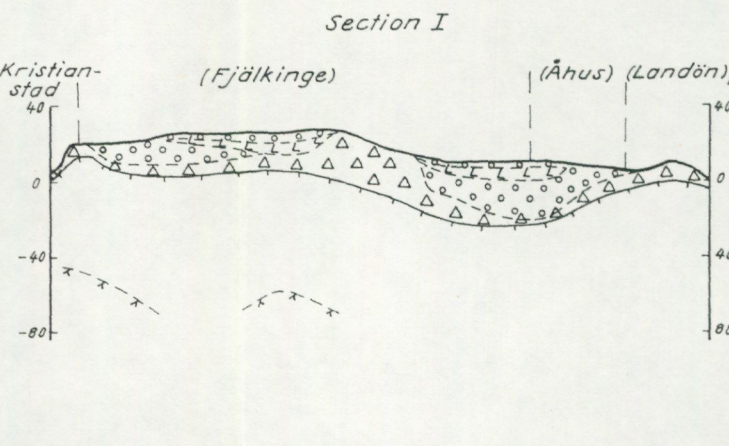
THE KRISTIANSTAD PLAIN

Sections I - V



	Gravel, sand and silt
	Clay
	Till
	Peat
	Surface of the Cretaceous
	Surface of the Archean

Horizontal scale 1:200 000
Vertical scale 1:4000
The orientation of the sections is shown on Pl. 1.



Tertiary Diatoms and Silicoflagellates in the Kristianstad plain

- = common > 25 %
- = rather common > 5 < 25 %
- + = rare < 5 %

LOCALITY:
BORING:
SAMPLE No:
DEPTH M:

		ÅHUS					MAG-LE-HEM	VITT-SKOV-LE
11 a	11 b		106		17	8		
13091	2215	2216	2217	12919	12920	3557	2000	
8	20	30	40	7-15	15-18	17-35	20-30	
I DIATOMAEAE:								
<i>Actinoptychus undulatus</i> (Bailey) Ralfs v. <i>octoplicata</i> A. Cleve		+						
<i>Arachnoidiscus barbadensis</i> A. Schmidt	+							
<i>indicus</i> Ehrenberg v.	+	+						
(fragments)	+				+	+		
<i>Aulacodiscus crux</i> Grunow v. <i>glacialis</i> Grunow		+						
<i>Biddulphia rigida</i> A. Schmidt v. <i>scandica</i> A. Cleve		+						
sp.		+						
spp. (fragments)	+	+			+			
<i>Coscinodiscus antiquus</i> Grunow v. <i>paucispina</i> A. Cleve	+	+			+			
" " v. <i>regularis</i> A. Cleve	+	+			+			
<i>crassus</i> Bailey	+	+						
<i>decrescens</i> Grunow	+	+			+			
<i>denarius</i> A. Schmidt	+	+			+			
<i>heteroporus</i> Ehrenberg	+	+			+			
<i>oculus-iridis</i> Ehrenberg v. <i>borealis</i> (Bailey) P. T. Cleve	+	+						
<i>payeri</i> v. <i>subrepleta</i> Grunow	+				+			
<i>polyactis</i> A. Cleve	+	+			+			
sp.	+	+						
spp. (fragments)	+	+	+	+	+	+	+	
<i>Craspedodiscus / oblongus</i> (Greville) A. Schmidt v. / <i>minor</i> A. Cleve	+	+			+			
<i>Endictya zabelinae</i> A. Cleve	+	+			+			
<i>Hemiaulus danicus</i> Grunow	+	+						
(<i>februatus</i> Heiberg var.) <i>maximus</i> A. Cleve f. <i>major</i>	+	+	+	+	+			
" " " " " " f. <i>minor</i>	○	+	○	+	○	+	+	
sp. I			+		+			
sp. II					+			
spp. (fragments)	○	+	○	+	○			
<i>Hesslandia scanica</i> A. Cleve	+	+						
<i>Isthmia nervosa</i> Kützing	+				+	+		
" " f. <i>microspora</i> A. Cleve	+							
<i>Lepidodiscus hesslandi</i> A. Cleve	+	+			+			
<i>Melosira clavigera</i> Grunow v. <i>minor</i> A. Cleve	+	+			+			
<i>ornata</i> Grunow	+	+			+			
" " v. <i>minor</i> A. Cleve	+	+			+			
(<i>Paralia</i>) <i>sulcata</i> v. <i>biseriata</i> Grunow f. <i>major</i>	○	○		+	○			
" " " " " " f. <i>minor</i>	●	○	●	+	●	+	+	
" " " " " " v. <i>crenulata</i>	+	+			+			
<i>Odontotropis carinata</i> Grunow	+							
<i>Pyxilla carnifera</i> Grunow	+							
<i>dubia</i> Grunow	+				+			
spp.	+				+			
<i>Sceptroneis gemmata</i> Grunow v. <i>jutlandica</i> A. Cleve	○	+			+			
<i>Stephanogonia polygona</i> Ehrenberg v.	+	+			+			
<i>Stephanopyxis marginata</i> Grunow	+	+						
<i>minuta</i> (Grunow) A. Cleve	+							
<i>mølleri</i> (A. Schmidt) A. Cleve f. <i>major</i>	+		+		+			
<i>turris</i> v. <i>arctica</i> Grunow f. <i>inermis</i> Grunow	+	+	+		+			
" " " " " " f. <i>spinosa</i> A. Cleve	○	+			○			
" " " " " " v. <i>cylindrus</i> Grunow f. <i>inermis</i> Grunow	+	+	+		+			
" " " " " " f. <i>paucispina</i> Grunow	+	+	+		+			
spp. (fragments)	○	+	○		+	+	+	
<i>Stictodiscus kittonianus</i> Greville	+	+			+			
<i>Triceratium abyssorum</i> Grunow	+	+			+			
<i>flos</i> Ehrenberg v. <i>abusiensis</i> A. Cleve	+	+			+			
<i>mesoleium</i> Grunow	+	+			+			
<i>umbilicatum</i> Ralfs	+							
<i>Trinacria pileolus</i> v. <i>jutlandica</i> Grunow	+				+			
II SILICOFLAGELLATAE:								
<i>Dictyocha navicula</i> Ehrenberg v. <i>biapiculata</i> Lemmermann	+	+			+		+	
<i>staurodon</i> Ehrenberg	+	+			+			
<i>triacantha</i> Ehrenberg v. <i>hastata</i> Lemmermann		+			+			
" " v. <i>inermis</i> Lemmermann		+						
<i>Ebria antiqua</i> Schulz	○	○	+	+	○	+	+	
" " v. <i>simplex</i> Schulz	○	+	○	+	○	+		
<i>Mesocena polymorpha</i> v. <i>quadriangula</i> (Ehrenberg) Lemmermann	+							
III SPONGIE SPICULAE								
	●	○	●	○	○	●	○	

